



MILKEN  
INSTITUTE

# California's Blue Economy

# Blue Economy Industry Employment

Industry	Los Angeles County		Orange County		San Diego County	
	2020 Employment	LQ	2020 Employment	LQ	2020 Employment	LQ
Engineering Services	19,245	0.65	16,754	1.54	17,627	1.78
Support Activities for Water Transportation	13,184	5.14	168	0.18	284	0.33
R&D in the Physical, Engineering, & Life Sciences	12,109	0.91	5,192	1.06	18,032	4.04
R&D in Biotechnology (Except Nanobiotechnology)	3,177	0.47	574	0.23	17,261	7.67
Water Transportation	2,804	1.62	289	0.46	0	0
Zoos & Botanical Gardens	464	0.44	50	0.13	0	0
Scenic & Sightseeing Transportation, Water	224	0.74	238	2.15	496	4.91
Marinas	208	0.2	208	0.54	351	1
Other Electric Power Generation, Tidal	134	1.79	21	0.76	0	0
Ship & Boat Building	131	0.03	0	0	7,345	5.42
Aquaculture	40	0.20	0	0	8	0.12
<b>Total, All Industries</b>	<b>3,550,526</b>	<b>1.02</b>	<b>1,357,287</b>	<b>1.07</b>	<b>1,143,133</b>	<b>0.98</b>



Note: Highlight indicates high concentration. If LQ > 1, industry has a larger relative share of area employment than it does nationwide.

Source: Bureau of Labor Statistics - Quarterly Census of Employment and Wages

# Blue Economy Occupational Employment

Occupation	Typical Entry-Level Educational Requirement	Los Angeles MSA		San Diego MSA	
		2020 Employment	Avg. Annual Wage	2020 Employment	Avg. Annual Wage
Environmental Engineers	Bachelor's degree	2,250	\$108,310	1,150	\$96,020
Cargo and Freight Agents	High school diploma	8,060	\$51,290	1,080	\$45,230
Life, Physical, & Social Science Technicians	Associate's degree	3,680	\$58,560	780	\$67,960
Biological Scientists	Bachelor's degree	2,510	\$101,610	2,720	\$98,140
Captains, Mates, & Pilots of Water Vessels	Postsecondary nondegree award	500	\$79,930	230	\$77,310
Motorboat Mechanics & Service Technicians	High school diploma	260	\$51,840	250	\$53,800
Marine Engineers & Naval Architects	Bachelor's degree	40	\$104,730	-	\$87,480
<b>Total, All Occupations</b>	-	<b>5,822,510</b>	<b>\$63,660</b>	<b>1,399,990</b>	<b>\$64,300</b>

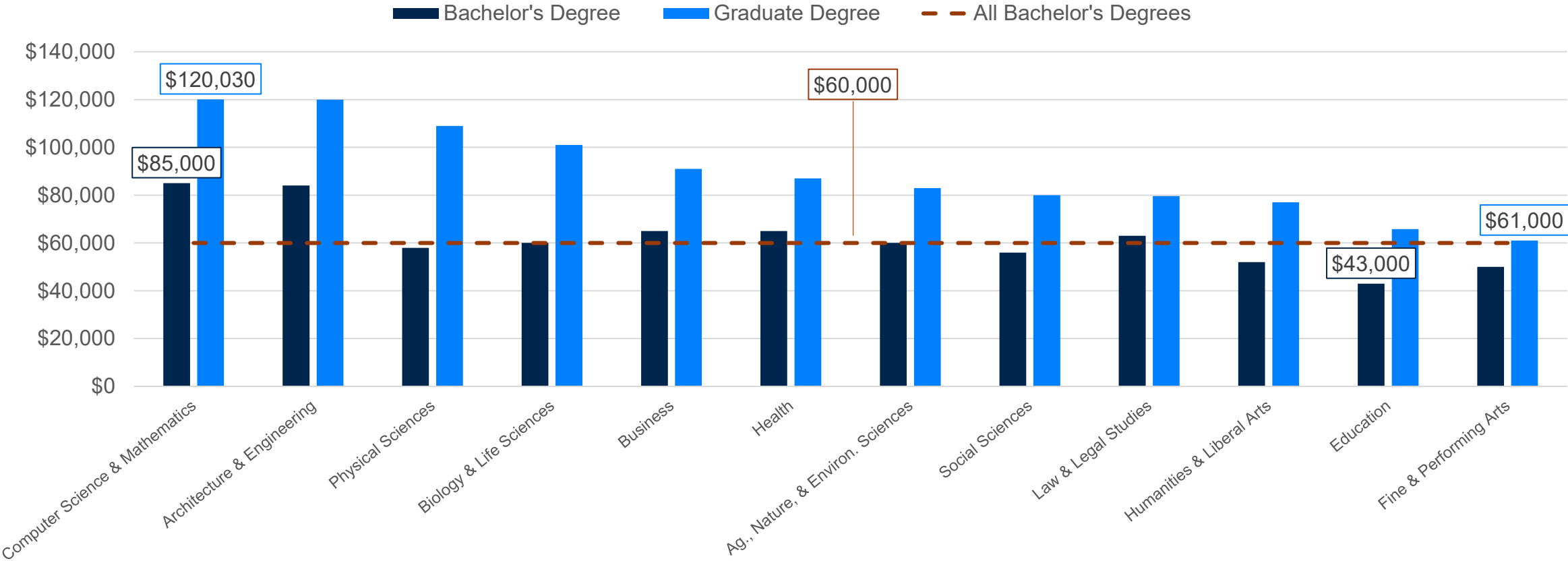
Note: Highlight indicates STEM field



Source: Bureau of Labor Statistics - Occupational Employment Statistics

STEM fields tend to pay more: those holding the highest-earning bachelor's degree (Computer Science & Mathematics) earn \$24,000 more than those holding the lowest-earning graduate degree (Fine & Performing Arts).

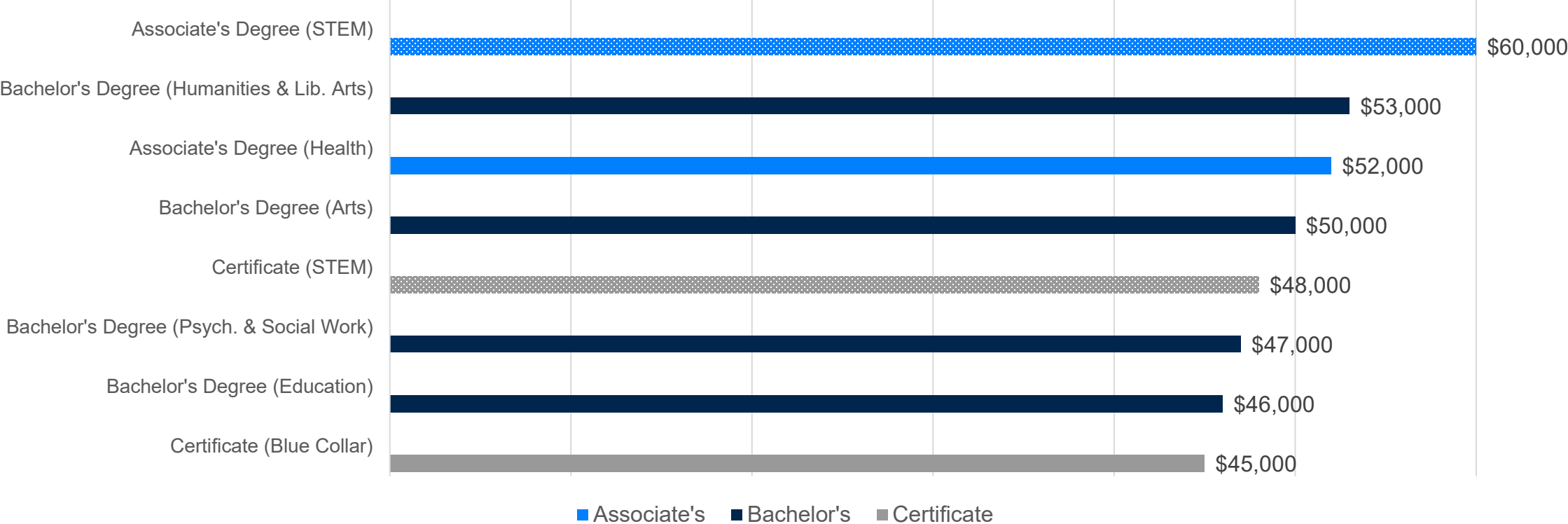
Median Earnings by Field of Study and Degree, California



Source: Milken Institute analysis of American Community Survey 1-Year Public Use Microdata Sample (2019)

# Associate's degree and certificate holders in a STEM field can earn more than Bachelor's degree holders in other fields.

Median Earnings by Education Level and Field of Degree, U.S.



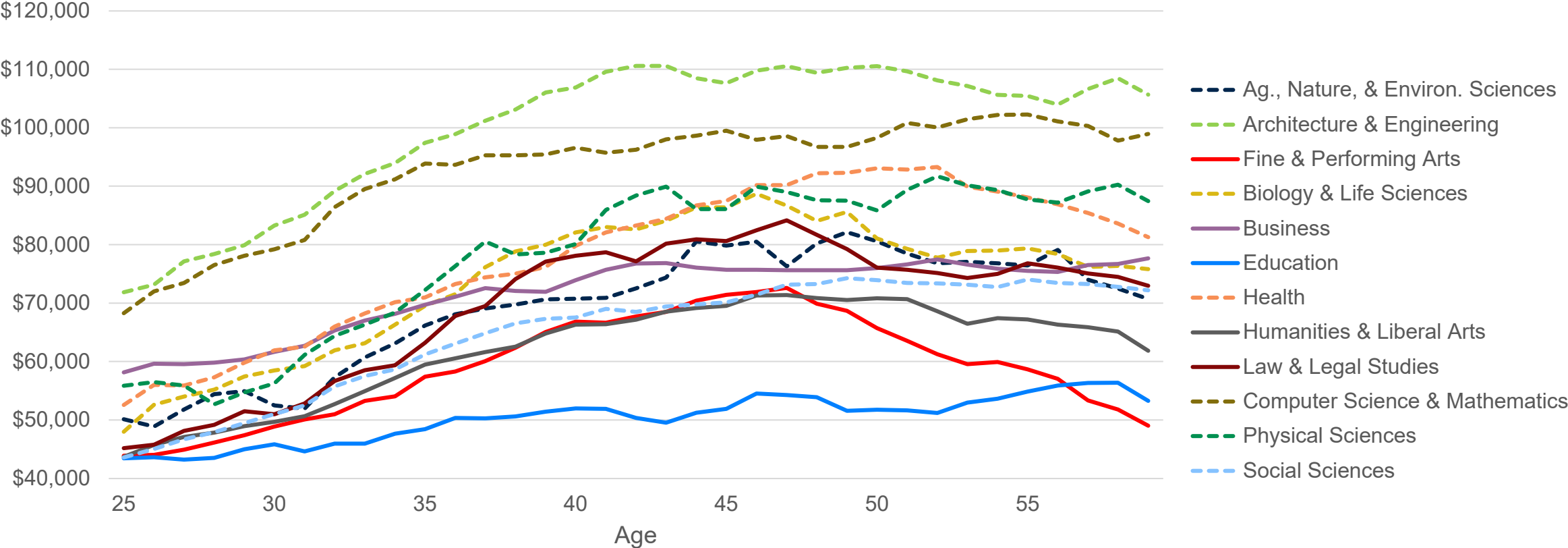
**Note: Dotted bar indicates STEM field**



Source: Georgetown University Center on Education and the Workforce analysis of Survey of Income and Program Participation (2004/2008 combined panels)

# The median earnings for Humanities, Education, and Arts majors never catch up to STEM fields.

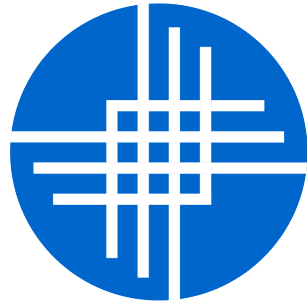
Career Median Earnings by Age & Field of Study (Bachelor's Degree Holders), California



Note: Dotted line indicates STEM field

Source: Milken Institute analysis of American Community Survey 1-Year Public Use Microdata Sample (2019)





**MILKEN  
INSTITUTE**

*[milkeninstitute.org](http://milkeninstitute.org)*