

STEM
SANTA MONICA COLLEGE

STEM-MAS NEWSLETTER

MAXIMIZING ACHIEVEMENT IN STEM (MAS)



STEM LOUNGE

Come by to check out the new STEM lounge area where students can grab snacks, eat/heat food, study, and play an occasional card game!



WINTER 2024

(310)434-3988

STEM@SMC.EDU

DH301

PROGRAM SERVICES

STEM COUNSELING



Appointments can be made via [Corsair Connect](#) or by contacting us directly via **email** or **phone** with your preferred day/time to meet, modality (**phone, video, or in-person appointment**), and student ID number.



PEER MENTORING & TUTORING

No appointments needed, walk-in tutoring.

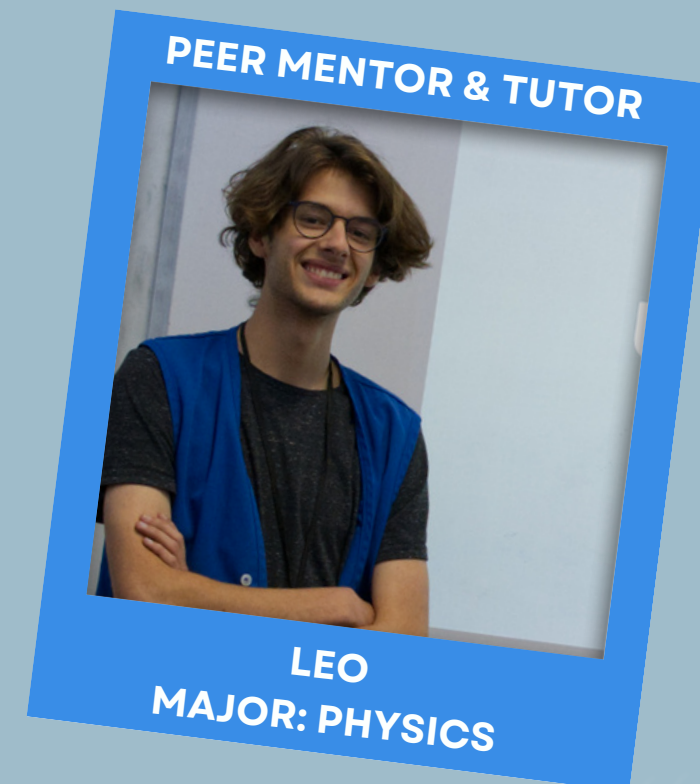
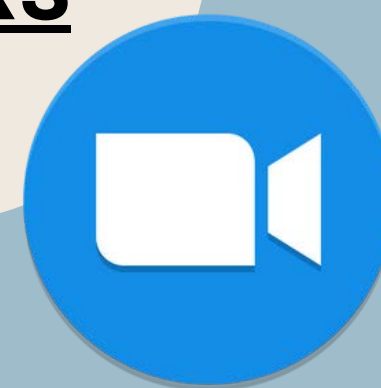


IN-PERSON HOURS

DH 302




VIRTUAL HOURS



MONDAY - THURSDAY 8 AM - 5 PM
FRIDAY CLOSED

MONDAY - FRIDAY 8 AM - 5 PM
ZOOM LINK

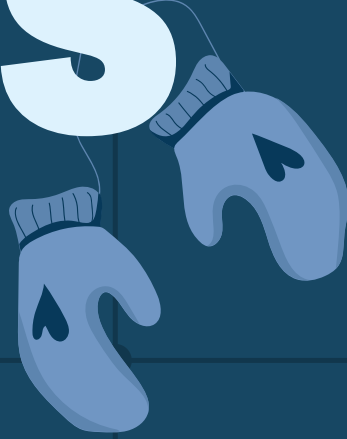


SUPPLEMENTAL INSTRUCTION (SI)

Supplemental Instruction (SI) is an academic assistance program at Santa Monica College that provides free out-of-class sessions to students enrolled in specific courses. SI leaders engage students in interactive group activities to help them learn concepts, prepare for exams, and learn effective study skills.

Subjects: Accounting - Anthropology - Biology - Chemistry - Computer Science - Economics - Engineering - English - Japanese - Math - Physics - Spanish

STEM-TUNINITIES



NOT SURE WHERE TO GET STARTED?

CLICK THE LINKS BELOW FOR HELPFUL RESOURCES AND VALUABLE TIPS CREATED BY THE CAREER SERVICES CENTER:



FINDING RESEARCH OPPORTUNITIES



CHOOSING AND CONTACTING REFERENCES



WAYS TO HAVE A PRODUCTIVE SUMMER BEYOND AN INTERNSHIP/RESEARCH OPPORTUNITY

Meet with our Career Center for major, internship, and research opportunity support!



TRANSFER-TO- EXCELLENCE BERKELEY

Summer Research Program is a residential 9-week summer internship at UC Berkeley. Program benefits:

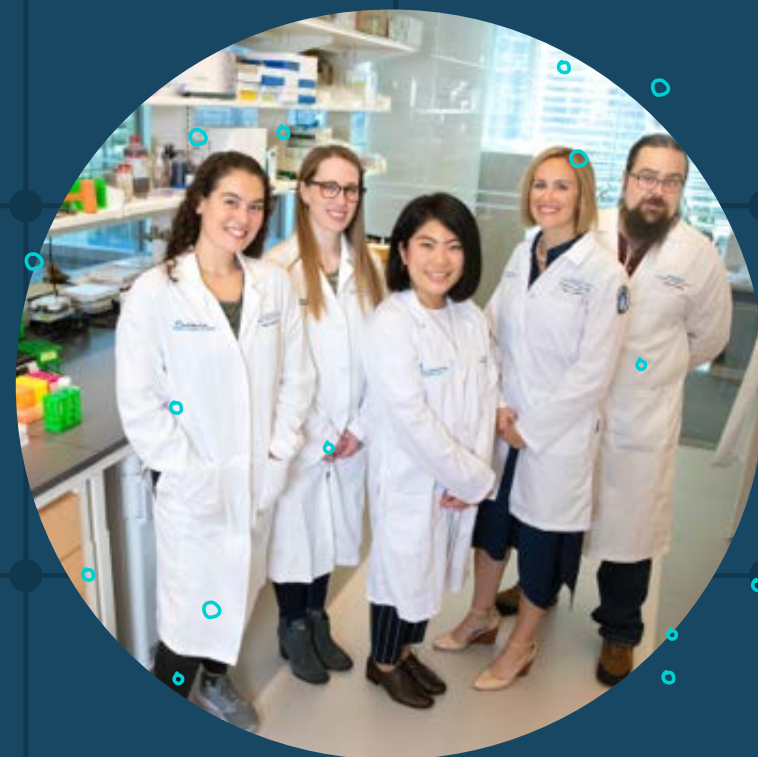
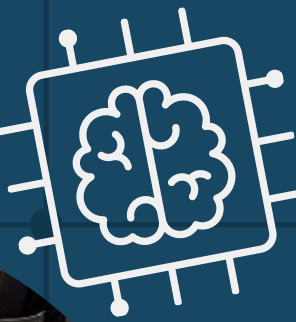
- \$3600 stipend plus room and board
- Seminars on preparing for careers in science and engineering
- Guest speakers, lab tours, and field trips

DEADLINE: FEB 11, 2024
APPLY HERE

UCLA BREAKTHROUGH TECH AI

Hosted at UCLA, the 12-month program will help undergraduate college women (trans and cis), nonbinary, and other underrepresented groups in tech master the skills necessary to get jobs in the fastest-growing areas of tech: data science, machine learning, and artificial intelligence.

DEADLINE: FEB 5, 2024
APPLY HERE



KATZ AND MANNE RESEARCH INSTITUTE SUMMER SCHOLARS PROGRAM

8-week paid summer research program providing students with an opportunity to explore research pertaining to pediatric health and disease.

- In-person hands-on research experience
- Participate in mentoring meetings and career development workshops

DEADLINE: JAN 26, 2024
APPLY HERE



COMMUNITY COLLEGE FIELD BIOLOGY ALLIANCE

8-month research internship exploring ecological sciences hands-on and assisting researchers with ecological data collection.

- Travel for a week of camping in the Sierra National Forest to work alongside field ecologists
- Develop an original research project
- 6-hour a month time commitment & \$1,000 stipend

DEADLINE: FEB 28, 2024
APPLY HERE



NEED HELP WITH
RESUME WRITING
AND/OR INTERNSHIP
PERSONAL
STATEMENTS?



**RESUME WRITING
FOR STEM MAJORS**



**PERSONAL
STATEMENT &
SUPPLEMENTAL
QUESTIONS**

NEED 1-ON-1 HELP
WITH RESUME
WRITING OR
PERSONAL
STATEMENTS?



**WRITING &
HUMANITIES
TUTORING CENTER**

**SCHEDULE AN
APPOINTMENT ON
CORSAIR CONNECT**

**DH 312/VIRTUAL
MON - THU
8:30 AM - 7:00 PM
FRIDAY
9:00 AM - 2:00 PM**

STEM-TUNNITIES



UCLA BRUINS-IN-GENOMICS (B.I.G)

Summer Research Program is an 8-week full-time immersion summer program at UCLA. Program benefits:

- \$4600 stipend and additional funds available for housing, travel, and conference attendance
- Seminars on career building, next-generation sequencing data, statistical analysis methods, and more

DEADLINE: MARCH 1, 2024

APPLY HERE

USC SUMMER UNDERGRADUATE RESEARCH EXPERIENCE (SURE)

8-week summer program where participants learn about cutting-edge research under the guidance of world-renowned USC faculty researchers and mentorship from PhD students

- \$5,200 stipend plus room, paid food and travel expenses
- Relevant Majors: Engineering, Math, Computer Science, or hard science (biology, chemistry, physics)
- Guest speakers, field trips, and networking opportunities

DEADLINE: FEB 9, 2024

APPLY HERE



STANFORD SUMMER CC PREMEDICAL PROGRAM

Summer Research Program is an 8-week full-time immersion summer program at UCLA. Program benefits:

- \$4600 stipend and additional funds available for housing, travel, and conference attendance
- Seminars on career building, next-generation sequencing data and statistical analysis methods, and more

DEADLINE: MARCH 1, 2024

APPLY HERE

US DEPARTMENT OF ENERGY COMMUNITY COLLEGE INTERNSHIPS

10-week summer research program where participants will be under the guidance of a laboratory scientist or engineer at a Department of Energy Laboratory

- \$6500 stipend, transportation expenses will be reimbursed
- Participate in career enrichment activities, including career professional development workshops, and much more

DEADLINE: JAN 9, 2024

APPLY HERE



IMPORTANT REMINDERS PT. I



**JAN
15**

**UNIVERSITY
OF
CALIFORNIA**

CSU The California State University

UC TRANSFER ADMISSION EXTENSION

- **UC Merced:** freshman and transfer for most majors
- **UC Irvine:** transfer applications for some majors
- **UC Davis UC Riverside UC San Diego UC Santa Barbara UC Santa Cruz:** transfer applications for all majors

CSU TRANSFER ADMISSION EXTENSION

Many California State University (CSU) campuses have extended their application deadlines. To find out which are still open use the [CSU Application Dates & Deadlines Website](#).

UC & CSU TRANSFER ADMISSION UPDATE (TAU)

- After applying, transfer students are required to update their grades and course records.
- You must log in to your application and complete the Transfer Academic Update.
- TAUs NEED to include grades through fall 2023 and planned coursework through summer 2024. The priority deadline is January 31, 2024.

**JAN
31**

**MAR
2**

FAFSA[®]
Federal Student Aid
An OFFICE of the U.S. DEPARTMENT of EDUCATION

California
DreamAct

FINANCIAL AID APPLICATION

- **FAFSA AND CADAA AVAILABLE ONLINE IN JANUARY!** Please complete your financial aid application for 2024-2025 by the suggested March 2nd priority deadline. If you have questions about FAFSA or CADAA, STEM Counselors are available during the winter session to help you!

PRIVATE AND OUT-OF-STATE SCHOOL DEADLINES



Most private schools and out-of-state schools use the Common Application. Here are some application deadlines for popular schools:

Loyola Marymount University: Feb 1

University of Michigan: Feb 1

University of Southern California (USC): Feb 15

Columbia University: March 1

Massachusetts Institute of Technology (MIT): March 15



Check out the Private (California and Out of State) Schools Workshops happening through our Transfer Center!



STEM/MAS PROGRAM APPLICATION COMING SOON

The STEM Program application will become available at the beginning of the Spring semester! Sign up for our prospective student mailing list to receive updates.

Website Link

current/active STEM Program participants do not have to reapply





RESOURCES

EMAIL STEM@SMC.EDU FOR MORE INFORMATION



1

BODEGA

Currently enrolled students are eligible
Winter Hours:

- Mon & Wed 11:00 AM - 3:30 PM
- Thursday 12:00 PM - 4:30 PM

15 SMC Bodge Bites locations that provide students with healthy snacks

- [Locations](#)



2

MEAL PROJECT

- Currently enrolled SMC students facing food insecurity can receive free meal support.
- [Learn more here](#)

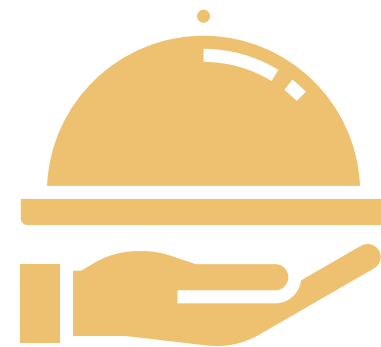


3

EVERYTABLE

Fresh meals available weekly at SMC Bodega. Chef-prepared, nutritious meals that can be picked up at SMC Bodega.

[Learn more here](#)

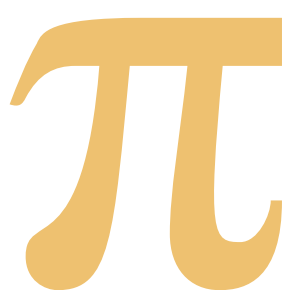


4

BENTO

Order nearby pick-up meals each month to-go meals from participating restaurants by texting a request.

[Learn more here](#)



5

MATH MODULES

- Need more support in Algebra, Trigonometry, Statistics, or Calculus?
- Add self-paced math modules for more resources!
- [Add now!](#)



6

CHROMEBOOK LENDING

- Meet with a counselor to request a Chromebook for the Winter and/or Spring semesters!



7

THE CHANGE REACTION

- Need help covering an emergency expense? We may be able to help!
- The Change Reaction is a non-profit that provides SMC students with immediate financial assistance for urgent needs.



8

LENDING RESOURCES

Did you know you could borrow the following items from the STEM Program?

- White Lab Coats (CHEM 9, 10, 11, 12, 31)
- Flame Retardant Lab Coats (CHEM 21, 24)
- Goggles for Lab
- Scientific & Graphing Calculators