


INSTALLING CITRIX CLIENT ON A MAC

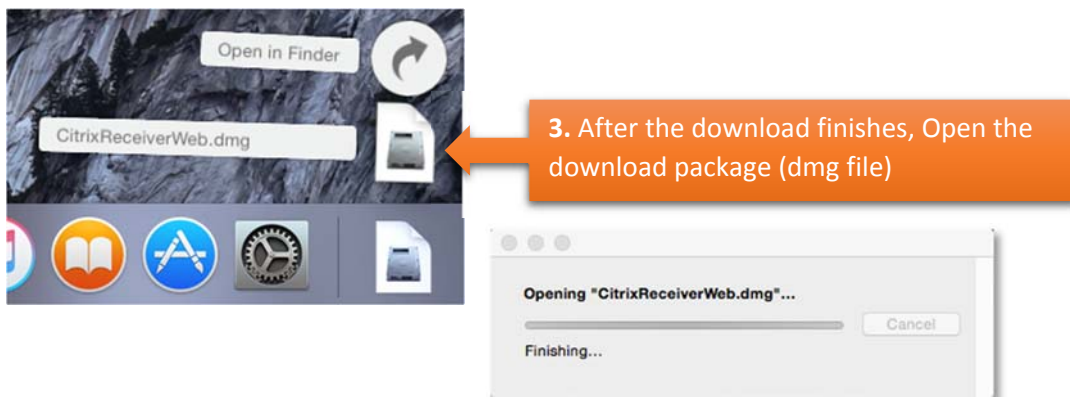
DOWNLOADING AND INSTALLING:

You only need to follow the installation steps only **once** on each computer you intend to use.



1. Open a browser and go to: receiver.citrix.com

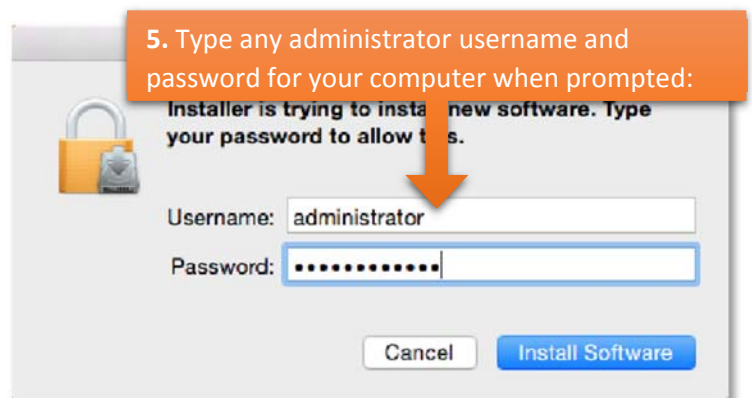
2. Download the latest version of receiver by clicking on the Download button.



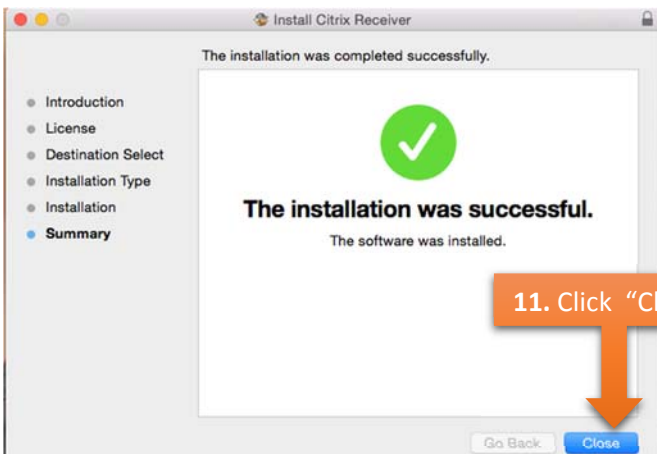
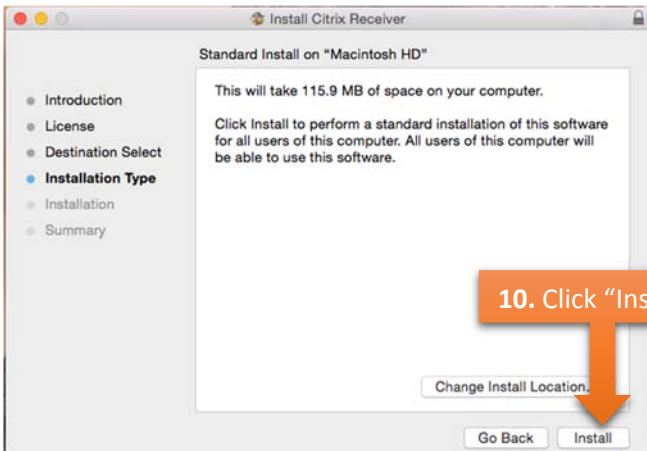
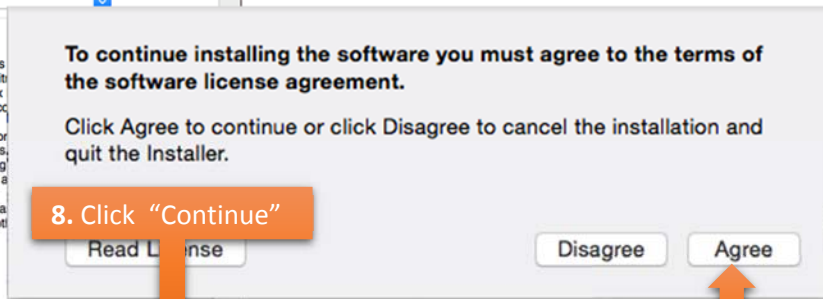
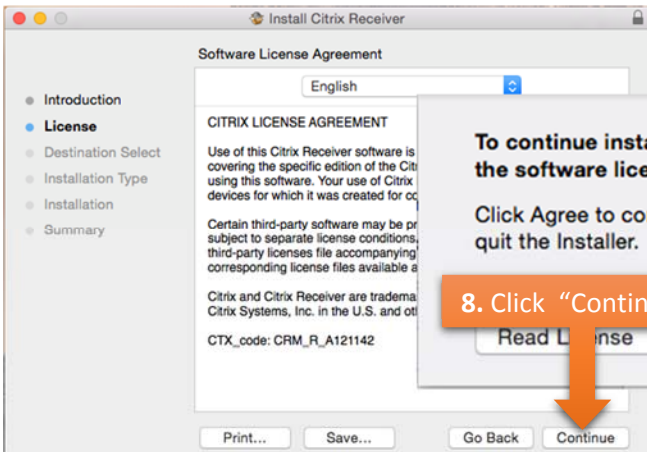
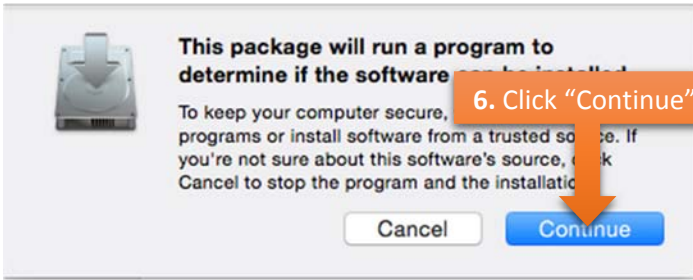
3. After the download finishes, Open the download package (dmg file)



4. Click on "Install Citrix Receiver"

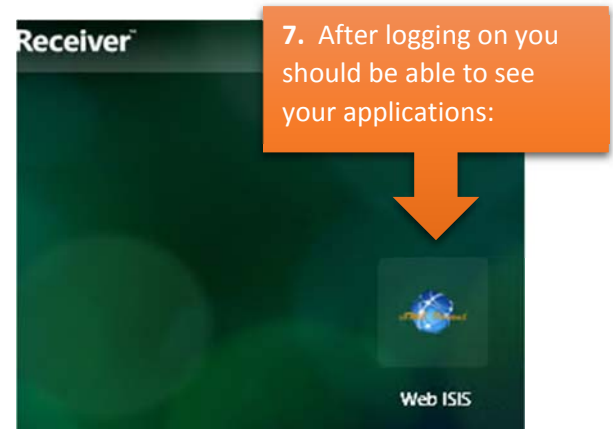
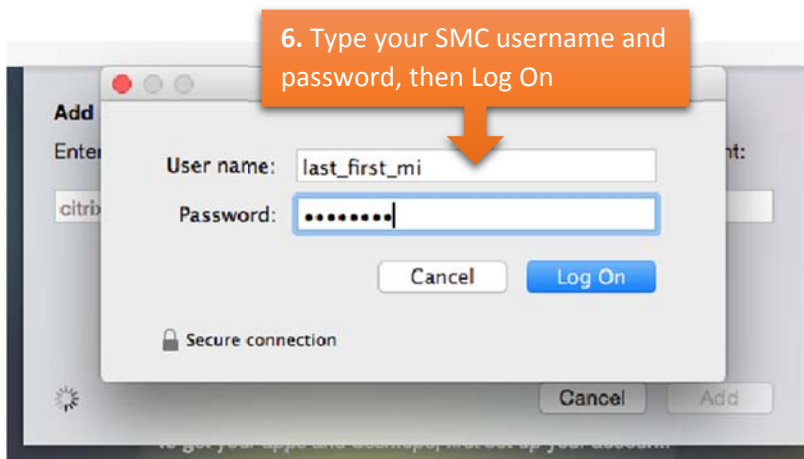
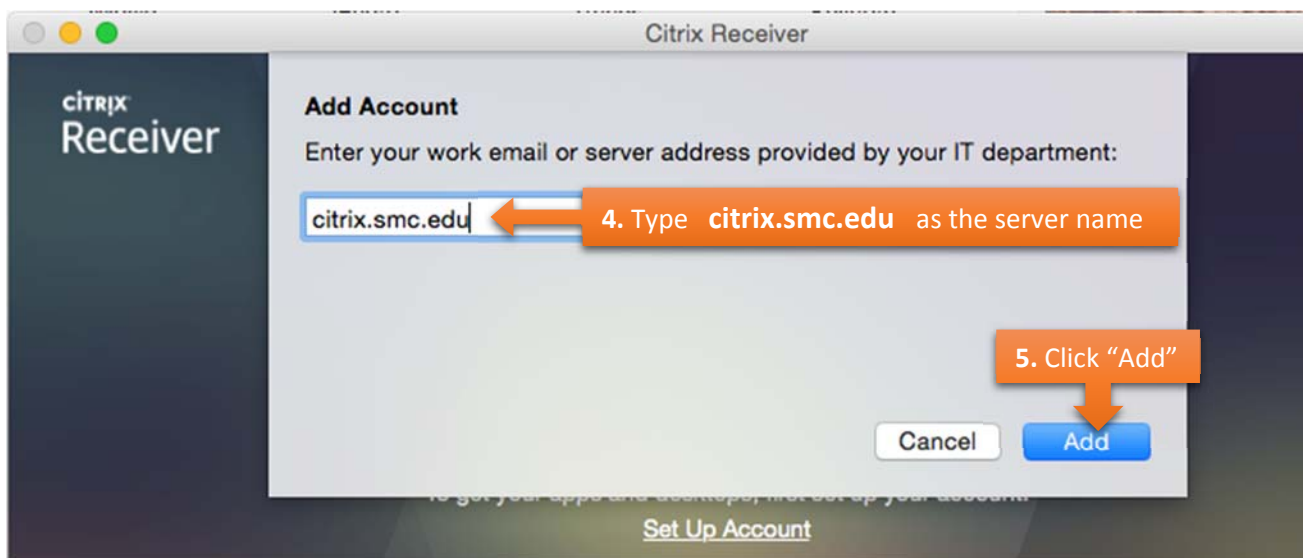
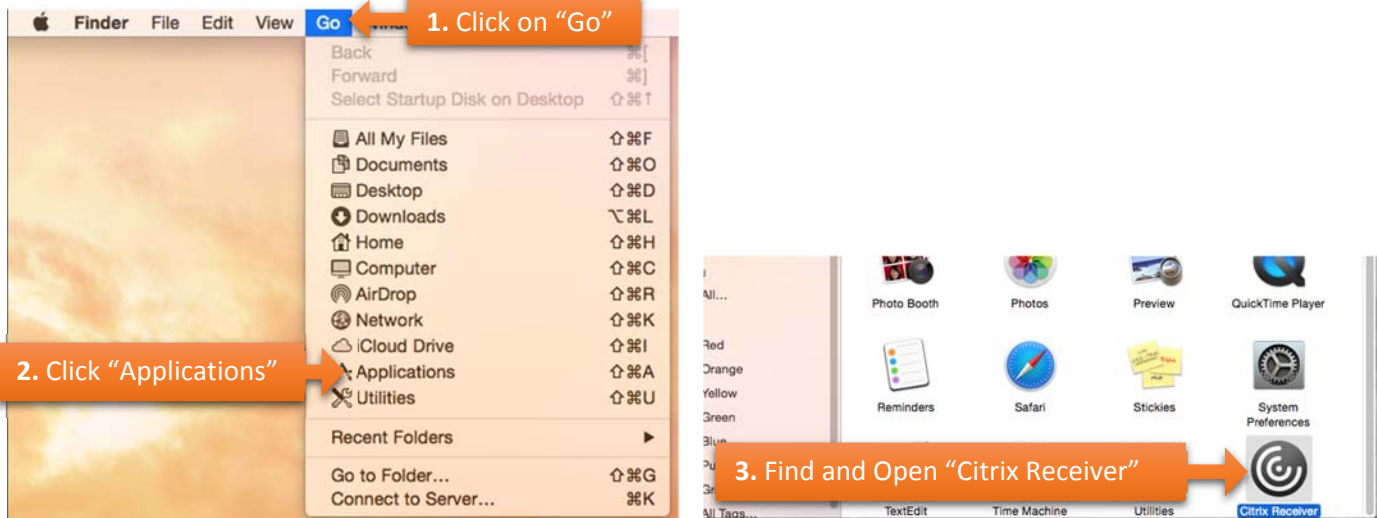


5. Type any administrator username and password for your computer when prompted:



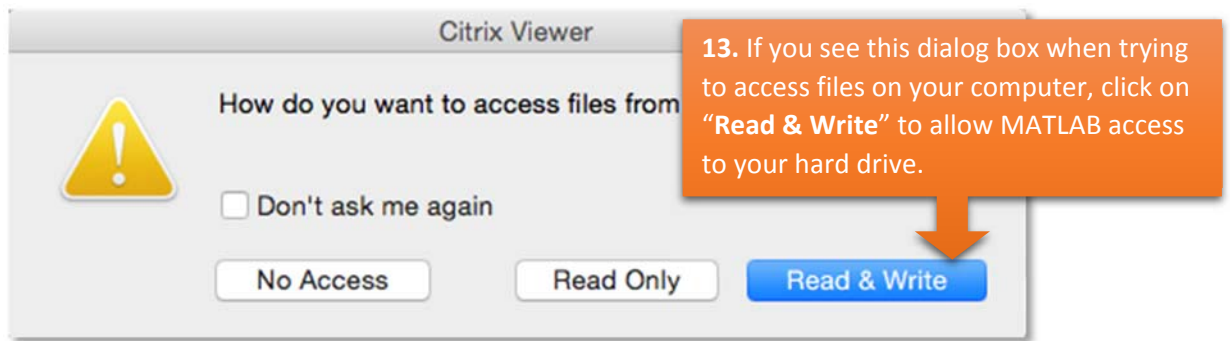
CONFIGURING CITRIX RECEIVER FOR SMC

The following steps will configure Citrix Receiver to connect to SMC servers, independent of any browser.



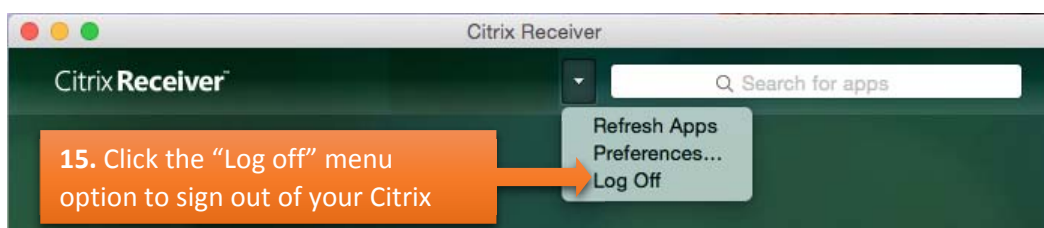
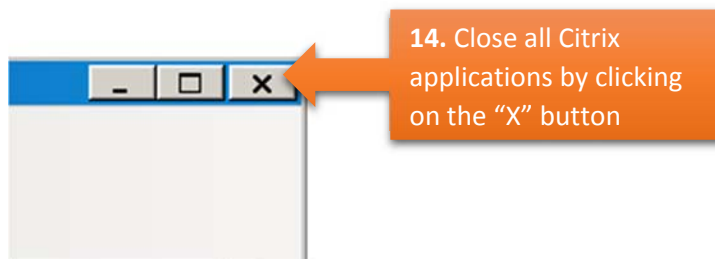
OPENING AN APPLICATION

Click on one of the Applications to start using it.



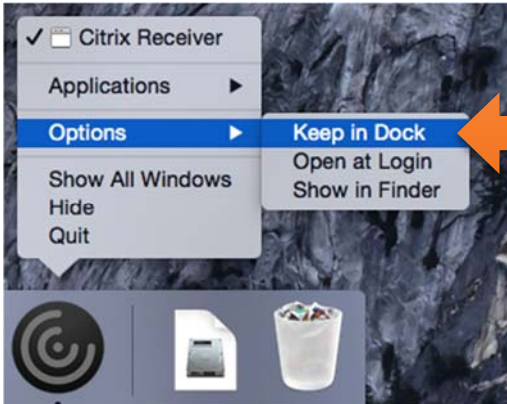
LOGGIN OFF

It is advisable to log off to prevent losing data or corrupting access to MATLAB through Citrix.



TIPS:

1. If you intend to use Citrix frequently, we recommend to dock the application.



1. One way of doing this is by pressing and holding "Control" key on your keyboard and (at the same time) clicking on the Citrix icon.

2. We also recommend getting familiar with **working with files and folders in Windows 7**. You can search the internet for various tutorials in text and video formats. Use the text in bold above to get the best results.