

---

**Welcome to the  
Santa Monica College Airport Campus  
Long Range Master Plan**

## **Community Visioning Session #1**

Tuesday, March 29  
Wednesday, March 30  
7:00 pm – 9:00 pm

**Visioning Session**  
**Santa Monica College Airport Campus Long Range Master Plan**

**WWC**  
**OT**  
ARCHITECTURE  
PLANNING  
FORENSICS  
INTERIORS



Blair Seibert, AIA



Andrea C. Gehring, AIA



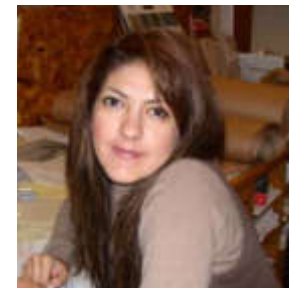
Gretchen Wahab, CID



Ben Levin, AIA



Lisa Munoz



Yeva Arutyunyan

# Viewing Session

## Santa Monica College Airport Campus Long Range Master Plan

---

## Community Visioning Session Goal:

Provide a forum for residents to share their vision for and concerns about the Airport Campus

Facilitate focused community discussion sessions & promote the constructive sharing of ideas

Include the community in the Airport Campus Master Plan process... this is the first of at least three community meetings

Integrate your vision into the final Airport Campus Site Plan proposal

---

## Santa Monica College Overview

**Viewing Session**  
Santa Monica College Airport Campus Long Range Master Plan

"The Airport Campus is the Largest Satellite Site @ 10.4 acres."



- 1. Emeritus College   2. Madison Campus   3. Santa Monica High School   4. Santa Monica College Main Campus   5. Vacant Lot @14th & Pico Blvd.
- 6. Academy of Entertainment and Technology   7. Administration   8. Art Campus   9. Airport Shuttle Parking   10. Airport Campus



ENLARGED AERIAL OF SANTA MONICA CAMPUSES & SITES

# Visioning Session

## Santa Monica College Airport Campus Long Range Master Plan





MADISON CAMPUS

SANTA MONICA CAMPUSES SITE PLAN



ACADEMY OF ENTERTAINMENT AND TECHNOLOGY CAMPUS

# Visioning Session

## Santa Monica College Airport Campus Long Range Master Plan



 **AIRPORT ART CAMPUS**

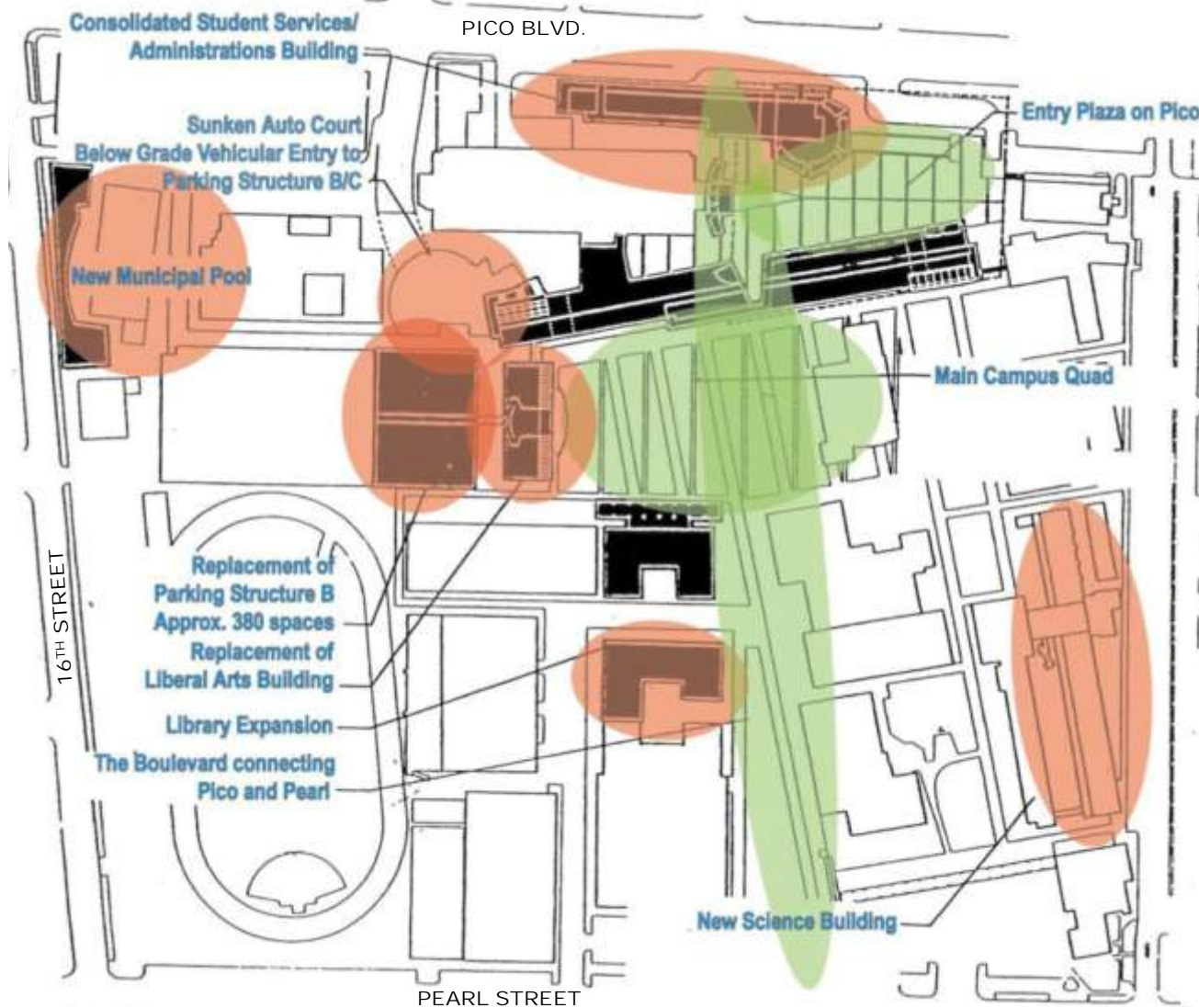


 **EMERITUS COLLEGE**

**SANTA MONICA CAMPUSES SITE PLAN**

**Visioning Session**

**Santa Monica College Airport Campus Long Range Master Plan**

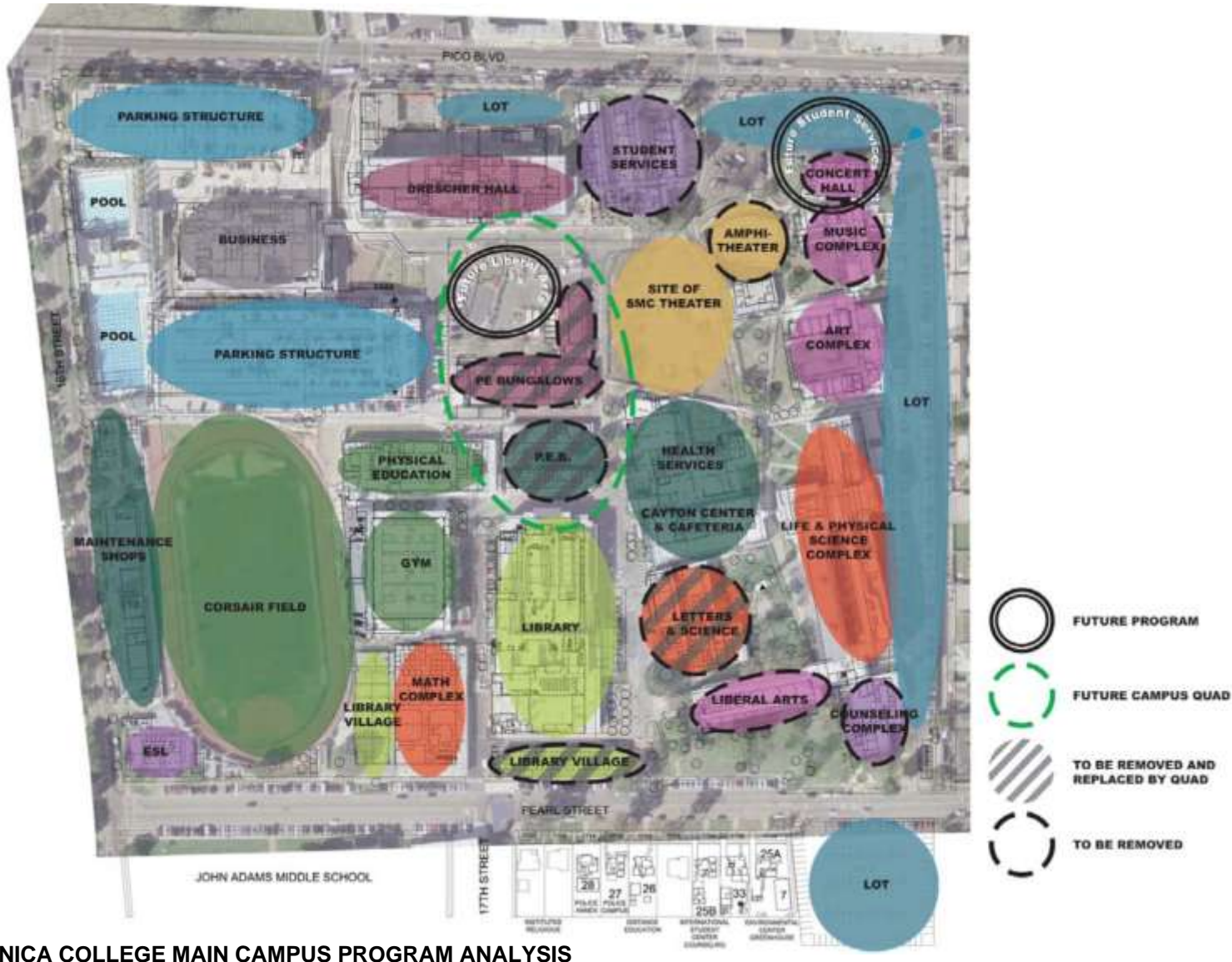


FUNDED COMPONENTS OF 1998 MASTER PLAN

# Visioning Session

## Santa Monica College Airport Campus Long Range Master Plan





SANTA MONICA COLLEGE MAIN CAMPUS PROGRAM ANALYSIS

# Visioning Session

## Santa Monica College Airport Campus Long Range Master Plan



ENLARGED AERIAL SITE PHOTO & PROPOSED PARK

# Visioning Session

## Santa Monica College Airport Campus Long Range Master Plan





---

## Airport Campus Site Improvements

Removed 100,000 square foot building

Constructed new sound wall on south and east

Removed overhead power lines

Constructed a new roadway to tie upper and lower lots

Planted more than 200 new trees

---

## Santa Monica College Shuttle

Began operating in 1988

Improves traffic around SMC main campus

Replaces parking lost in 1994 earthquake

Mitigates parking displacement due to 1998 preferential parking expansion

Transports 1,700 students each way daily



---

## Programs at the Airport Campus starting in 2005

- **Health Sciences:** Registered Nurse (AA Degree & Transfer)  
Contract training with area hospitals
- **Education:** Early Childhood Development (AA Degree & Transfer)  
Future K-12 teacher courses  
Teacher professional development  
Family literacy
- **Continuing Education:** Continuing Education credit for professionals  
Courses for professional development
- **Community Education:** Courses for personal interest
- **General Education:** Courses to meet transfer requirements



OPTION A: SURFACE PARKING

# Viewing Session

## Santa Monica College Airport Campus Long Range Master Plan





OPTION B: COLLECT SURFACE PARKING INTO STRUCTURED PARKING

**Viewing Session**  
**Santa Monica College Airport Campus Long Range Master Plan**







OPTION C: SHUTTLE PARKING & SURFACE PARKING CONSOLIDATED IN PARKING STRUCTURE



**San**ta Monica College Airport Campus Long Range Master Plan

**Visioning Session**



---

**Santa Monica College Faculty & Staff  
Visioning Session #1 for the Airport Campus**

Santa Monica College Library  
February 25, 2005

**Visioning Session**  
**Santa Monica College Airport Campus Long Range Master Plan**

**WWC**  
**OT**  
ARCHITECTURE  
PLANNING  
FORENSICS  
INTERIORS

---

## **SMC Faculty & Staff Visioning Session Goal:**

Provide a forum for Santa Monica College administration, faculty and staff to share their vision for the potential program occupants, identity and functionality of the Airport Campus

## **Visioning Session Questions:**

1. What programs need to grow?
2. What programs need to modernize?
3. What portions of programs could be moved to the Airport Campus?
4. What programs are being displaced from changes on campus?
5. What campus support spaces could be relocated?

---

## Visioning Session Discussion

- **Programs at Airport Campus starting in 2005**

Health Sciences

Education

Continuing Education

Community Education

General Education

- **Potential program relocation candidates (growth/modernization)**

Cinema / Broadcasting / Communication

Fashion Merchandising

Nursing & Health Sciences

- **Airport Campus Recommendations**

Relocate **stand-alone programs**

Establish the **Career Opportunity Center** at the Campus

Create a **campus identity** based on program offerings

Create a **pedestrian and neighborhood friendly campus**

Highlight **innovative teaching strategies**

Provide **amenities** such as a student bookstore and student food service

---

# Community Visioning Session

Visioning Session

Santa Monica College Airport Campus Long Range Master Plan





---

## Community Visioning Session

Divide into discussion groups

Nominate a group recorder & presenter

Discuss each question & document your group's vision

Regroup to share information

## Reminders

Participation by everyone is encouraged... we want to hear from you

Please be respectful of one another's vision, thoughts and opinions

Be creative!

---

## Community Visioning Session Questions

1. What educational programs and/or amenities can Santa Monica College provide at the Airport Campus to support your community?
2. What traffic and circulation questions / concerns do you have for the SMC Airport Campus traffic consultant?
3. What is your vision for the planned green space within the SMC Airport Campus?
4. What is the single most important issue related to the Airport Campus that you would like for Santa Monica College to address in future meetings?

---

## Next Steps & Future Meetings

**Viewing Session**  
Santa Monica College Airport Campus Long Range Master Plan

---

## WWCOT - Next Steps

Review and analyze information collected during the Community Visioning Session

Prepare the “Community Visioning Session Findings” document  
*(will be posted on the SMC Facilities Website at [www.smc.edu/facilities\\_airport](http://www.smc.edu/facilities_airport))*

Develop Site Plan Alternatives incorporating the Community Visioning Session Findings

## Future Meetings

Community Meeting #2: Presentation & Work Group Discussion of Airport Campus Site Plan Alternatives

Community Meeting #3: Presentation of Recommended Airport Campus Site Plan

On-campus meetings with Santa Monica College administration, faculty and staff

Additional meetings will be held in connection with the Environmental Review Process

**Visioning Session**  
**Santa Monica College Airport Campus Long Range Master Plan**



---

**We appreciate your time &  
participation... thank you!!**

**Viewing Session**  
**Santa Monica College Airport Campus Long Range Master Plan**

**WWC**  
**OT**  
ARCHITECTURE  
PLANNING  
FORENSICS  
INTERIORS