

APPENDIX D:
AIR QUALITY WORKSHEETS

SMC Malibu Campus
Los Angeles-South Coast County, Winter

1.0 Project Characteristics

1.1 Land Usage

Land Uses	Size	Metric	Lot Acreage	Floor Surface Area	Population
Junior College (2Yr)	19.70	1000sqft	1.45	19,700.00	0
Government (Civic Center)	5.60	1000sqft	0.00	5,600.00	0
Parking Lot	189.00	Space	1.50	75,600.00	0

1.2 Other Project Characteristics

Urbanization	Urban	Wind Speed (m/s)	2.2	Precipitation Freq (Days)	33
Climate Zone	8			Operational Year	2017
Utility Company	Southern California Edison				
CO2 Intensity (lb/MWhr)	630.89	CH4 Intensity (lb/MWhr)	0.029	N2O Intensity (lb/MWhr)	0.006

1.3 User Entered Comments & Non-Default Data

Project Characteristics -

Land Use - Total lot area is 2.95 acres (1.45 acres bldg., landscape and hardscape) and 1.5 acres of surface parking.

Construction Phase - Custom construction schedule with projected occupancy by 2017.

Grading - Site preparation to involve removal of existing landscaping in parking areas and in landscaped quad.

Demolition -

Land Use Change -

Sequestration - 76 new trees to be planted on site per landscape plan (Figure 2.21, Planting Plan)

Construction Off-road Equipment Mitigation -

Mobile Land Use Mitigation -

Energy Mitigation -

Water Mitigation - Water conservation bathroom fixtures to be mandatory per SMC conservation strategy. Outdoor water irrigation estimated per ETWU (31.73gpd/1,000sf) and 34,354 sf of irrigated area.

Waste Mitigation - Solid Waste Recycling per SMC, LA County and City of Malibu policies.

Table Name	Column Name	Default Value	New Value
tblConstructionPhase	NumDays	10.00	45.00
tblConstructionPhase	NumDays	220.00	229.00
tblConstructionPhase	NumDays	6.00	40.00
tblConstructionPhase	NumDays	10.00	15.00
tblConstructionPhase	NumDays	3.00	5.00
tblConstructionPhase	PhaseEndDate	11/27/2015	11/28/2015
tblConstructionPhase	PhaseEndDate	12/4/2015	12/6/2015
tblConstructionPhase	PhaseStartDate	12/7/2015	12/6/2015
tblGrading	AcresOfGrading	20.00	1.50
tblGrading	AcresOfGrading	7.50	1.50
tblGrading	MaterialImported	0.00	4,200.00
tblLandUse	LotAcreage	0.45	1.45
tblLandUse	LotAcreage	0.13	0.00
tblLandUse	LotAcreage	1.70	1.50
tblProjectCharacteristics	OperationalYear	2014	2017
tblSequestration	NumberOfNewTrees	0.00	76.00

2.0 Emissions Summary

2.1 Overall Construction (Maximum Daily Emission)

Unmitigated Construction

	ROG	NOx	CO	SO2	Fugitive PM10	Exhaust PM10	PM10 Total	Fugitive PM2.5	Exhaust PM2.5	PM2.5 Total	Bio- CO2	NBio- CO2	Total CO2	CH4	N2O	CO2e
Year	lb/day										lb/day					
2015	6.1576	68.1658	43.4324	0.0567	7.0134	3.4206	10.4340	3.5137	3.1470	6.6606	0.0000	5,884.913 1	5,884.913 1	1.4162	0.0000	5,914.652 4
2016	4.0511	33.8177	23.3121	0.0344	6.5711	1.7228	8.2938	3.4471	1.5849	5.0320	0.0000	3,240.856 4	3,240.856 4	0.6594	0.0000	3,254.703 1
2017	14.5631	16.5463	12.9382	0.0197	0.1677	1.0245	1.1922	0.0445	0.9437	0.9882	0.0000	1,944.954 9	1,944.954 9	0.5437	0.0000	1,956.371 6
Total	24.7718	118.5297	79.6827	0.1107	13.7521	6.1679	19.9200	7.0052	5.6756	12.6808	0.0000	11,070.72 43	11,070.72 43	2.6192	0.0000	11,125.72 71

Mitigated Construction

	ROG	NOx	CO	SO2	Fugitive PM10	Exhaust PM10	PM10 Total	Fugitive PM2.5	Exhaust PM2.5	PM2.5 Total	Bio- CO2	NBio- CO2	Total CO2	CH4	N2O	CO2e
Year	lb/day										lb/day					
2015	6.1576	68.1658	43.4324	0.0567	3.4979	3.4206	6.9185	1.6708	3.1470	4.8178	0.0000	5,884.913 1	5,884.913 1	1.4162	0.0000	5,914.652 4
2016	4.0511	33.8177	23.3121	0.0344	3.2305	1.7228	4.9533	1.6231	1.5849	3.2081	0.0000	3,240.856 4	3,240.856 4	0.6594	0.0000	3,254.703 1
2017	14.5631	16.5463	12.9382	0.0197	0.1677	1.0245	1.1922	0.0445	0.9437	0.9882	0.0000	1,944.954 9	1,944.954 9	0.5437	0.0000	1,956.371 6
Total	24.7718	118.5297	79.6827	0.1107	6.8960	6.1679	13.0640	3.3384	5.6756	9.0140	0.0000	11,070.72 43	11,070.72 43	2.6192	0.0000	11,125.72 71

	ROG	NOx	CO	SO2	Fugitive PM10	Exhaust PM10	PM10 Total	Fugitive PM2.5	Exhaust PM2.5	PM2.5 Total	Bio- CO2	NBio-CO2	Total CO2	CH4	N2O	CO2e
Percent Reduction	0.00	0.00	0.00	0.00	49.85	0.00	34.42	52.34	0.00	28.92	0.00	0.00	0.00	0.00	0.00	0.00

2.2 Overall Operational**Unmitigated Operational**

	ROG	NOx	CO	SO2	Fugitive PM10	Exhaust PM10	PM10 Total	Fugitive PM2.5	Exhaust PM2.5	PM2.5 Total	Bio- CO2	NBio- CO2	Total CO2	CH4	N2O	CO2e
Category	lb/day										lb/day					
Area	2.1750	2.1000e-004	0.0223	0.0000		8.0000e-005	8.0000e-005		8.0000e-005	8.0000e-005		0.0469	0.0469	1.3000e-004		0.0496
Energy	0.0108	0.0984	0.0826	5.9000e-004		7.4700e-003	7.4700e-003		7.4700e-003	7.4700e-003		118.0164	118.0164	2.2600e-003	2.1600e-003	118.7347
Mobile	2.5466	7.1103	27.6559	0.0657	4.4988	0.0996	4.5984	1.2030	0.0917	1.2947		5,620.9937	5,620.9937	0.2338		5,625.9035
Total	4.7325	7.2088	27.7608	0.0663	4.4988	0.1072	4.6060	1.2030	0.0992	1.3022		5,739.0570	5,739.0570	0.2362	2.1600e-003	5,744.6878

Mitigated Operational

	ROG	NOx	CO	SO2	Fugitive PM10	Exhaust PM10	PM10 Total	Fugitive PM2.5	Exhaust PM2.5	PM2.5 Total	Bio- CO2	NBio- CO2	Total CO2	CH4	N2O	CO2e
Category	lb/day										lb/day					
Area	2.1750	2.1000e-004	0.0223	0.0000		8.0000e-005	8.0000e-005		8.0000e-005	8.0000e-005		0.0469	0.0469	1.3000e-004		0.0496
Energy	9.2800e-003	0.0844	0.0709	5.1000e-004		6.4100e-003	6.4100e-003		6.4100e-003	6.4100e-003		101.2281	101.2281	1.9400e-003	1.8600e-003	101.8442
Mobile	2.5466	7.1103	27.6559	0.0657	4.4988	0.0996	4.5984	1.2030	0.0917	1.2947		5,620.9937	5,620.9937	0.2338		5,625.9035
Total	4.7309	7.1949	27.7490	0.0662	4.4988	0.1061	4.6049	1.2030	0.0982	1.3012		5,722.2687	5,722.2687	0.2359	1.8600e-003	5,727.7973

	ROG	NOx	CO	SO2	Fugitive PM10	Exhaust PM10	PM10 Total	Fugitive PM2.5	Exhaust PM2.5	PM2.5 Total	Bio- CO2	NBio-CO2	Total CO2	CH4	N2O	CO2e
Percent Reduction	0.03	0.19	0.04	0.12	0.00	0.99	0.02	0.00	1.07	0.08	0.00	0.29	0.29	0.14	13.89	0.29

3.0 Construction Detail

Construction Phase

Phase Number	Phase Name	Phase Type	Start Date	End Date	Num Days Week	Num Days	Phase Description
1	Demolition	Demolition	11/1/2015	11/28/2015	5	20	
2	Site Preparation	Site Preparation	11/29/2015	12/6/2015	5	5	
3	Grading	Grading	12/6/2015	1/29/2016	5	40	
4	Building Construction	Building Construction	1/30/2016	12/15/2016	5	229	
5	Paving	Paving	12/16/2016	1/5/2017	5	15	
6	Architectural Coating	Architectural Coating	1/6/2017	3/9/2017	5	45	

Acres of Grading (Site Preparation Phase): 1.5

Acres of Grading (Grading Phase): 1.5

Acres of Paving: 0

Residential Indoor: 0; Residential Outdoor: 0; Non-Residential Indoor: 41,352; Non-Residential Outdoor: 13,784 (Architectural Coating – sqft)

OffRoad Equipment

Phase Name	Offroad Equipment Type	Amount	Usage Hours	Horse Power	Load Factor
Architectural Coating	Air Compressors	1	6.00	78	0.48
Paving	Cement and Mortar Mixers	1	8.00	9	0.56
Demolition	Concrete/Industrial Saws	1	8.00	81	0.73
Building Construction	Generator Sets	1	8.00	84	0.74
Building Construction	Cranes	1	8.00	226	0.29
Building Construction	Forklifts	2	7.00	89	0.20
Site Preparation	Graders	1	8.00	174	0.41
Paving	Pavers	1	8.00	125	0.42
Paving	Rollers	2	8.00	80	0.38
Demolition	Rubber Tired Dozers	1	8.00	255	0.40
Grading	Rubber Tired Dozers	1	8.00	255	0.40
Building Construction	Tractors/Loaders/Backhoes	1	6.00	97	0.37
Demolition	Tractors/Loaders/Backhoes	3	8.00	97	0.37
Grading	Tractors/Loaders/Backhoes	2	7.00	97	0.37
Paving	Tractors/Loaders/Backhoes	1	8.00	97	0.37
Site Preparation	Tractors/Loaders/Backhoes	1	7.00	97	0.37
Grading	Graders	1	8.00	174	0.41
Paving	Paving Equipment	1	8.00	130	0.36
Site Preparation	Scrapers	1	8.00	361	0.48
Building Construction	Welders	3	8.00	46	0.45

Trips and VMT

Phase Name	Offroad Equipment Count	Worker Trip Number	Vendor Trip Number	Hauling Trip Number	Worker Trip Length	Vendor Trip Length	Hauling Trip Length	Worker Vehicle Class	Vendor Vehicle Class	Hauling Vehicle Class
Demolition	5	13.00	0.00	109.00	14.70	6.90	20.00	LD_Mix	HDT_Mix	HHDT
Site Preparation	3	8.00	0.00	0.00	14.70	6.90	20.00	LD_Mix	HDT_Mix	HHDT
Grading	4	10.00	0.00	525.00	14.70	6.90	20.00	LD_Mix	HDT_Mix	HHDT
Building Construction	8	42.00	17.00	0.00	14.70	6.90	20.00	LD_Mix	HDT_Mix	HHDT
Paving	6	15.00	0.00	0.00	14.70	6.90	20.00	LD_Mix	HDT_Mix	HHDT
Architectural Coating	1	8.00	0.00	0.00	14.70	6.90	20.00	LD_Mix	HDT_Mix	HHDT

3.1 Mitigation Measures Construction

Water Exposed Area

Clean Paved Roads

3.2 Demolition - 2015

Unmitigated Construction On-Site

	ROG	NOx	CO	SO2	Fugitive PM10	Exhaust PM10	PM10 Total	Fugitive PM2.5	Exhaust PM2.5	PM2.5 Total	Bio- CO2	NBio- CO2	Total CO2	CH4	N2O	CO2e
Category	lb/day										lb/day					
Fugitive Dust					1.1754	0.0000	1.1754	0.1780	0.0000	0.1780			0.0000			0.0000
Off-Road	3.0666	29.6778	22.0566	0.0245		1.8651	1.8651		1.7469	1.7469		2,509.0599	2,509.0599	0.6357		2,522.4104
Total	3.0666	29.6778	22.0566	0.0245	1.1754	1.8651	3.0405	0.1780	1.7469	1.9249		2,509.0599	2,509.0599	0.6357		2,522.4104

3.2 Demolition - 2015

Unmitigated Construction Off-Site

	ROG	NOx	CO	SO2	Fugitive PM10	Exhaust PM10	PM10 Total	Fugitive PM2.5	Exhaust PM2.5	PM2.5 Total	Bio- CO2	NBio- CO2	Total CO2	CH4	N2O	CO2e
Category	lb/day										lb/day					
Hauling	0.1159	1.7901	1.3512	4.0700e-003	0.0949	0.0286	0.1235	0.0260	0.0263	0.0523		413.8239	413.8239	3.4100e-003		413.8956
Vendor	0.0000	0.0000	0.0000	0.0000	0.0000	0.0000	0.0000	0.0000	0.0000	0.0000		0.0000	0.0000	0.0000		0.0000
Worker	0.0668	0.0894	0.9366	1.7800e-003	0.1453	1.4500e-003	0.1468	0.0385	1.3300e-003	0.0399		156.0140	156.0140	9.4300e-003		156.2121
Total	0.1827	1.8795	2.2878	5.8500e-003	0.2402	0.0301	0.2703	0.0645	0.0276	0.0922		569.8379	569.8379	0.0128		570.1077

Mitigated Construction On-Site

	ROG	NOx	CO	SO2	Fugitive PM10	Exhaust PM10	PM10 Total	Fugitive PM2.5	Exhaust PM2.5	PM2.5 Total	Bio- CO2	NBio- CO2	Total CO2	CH4	N2O	CO2e
Category	lb/day										lb/day					
Fugitive Dust					0.5289	0.0000	0.5289	0.0801	0.0000	0.0801			0.0000			0.0000
Off-Road	3.0666	29.6778	22.0566	0.0245		1.8651	1.8651		1.7469	1.7469	0.0000	2,509.0599	2,509.0599	0.6357		2,522.4104
Total	3.0666	29.6778	22.0566	0.0245	0.5289	1.8651	2.3940	0.0801	1.7469	1.8270	0.0000	2,509.0599	2,509.0599	0.6357		2,522.4104

3.2 Demolition - 2015

Mitigated Construction Off-Site

	ROG	NOx	CO	SO2	Fugitive PM10	Exhaust PM10	PM10 Total	Fugitive PM2.5	Exhaust PM2.5	PM2.5 Total	Bio- CO2	NBio- CO2	Total CO2	CH4	N2O	CO2e
Category	lb/day										lb/day					
Hauling	0.1159	1.7901	1.3512	4.0700e-003	0.0949	0.0286	0.1235	0.0260	0.0263	0.0523		413.8239	413.8239	3.4100e-003		413.8956
Vendor	0.0000	0.0000	0.0000	0.0000	0.0000	0.0000	0.0000	0.0000	0.0000	0.0000		0.0000	0.0000	0.0000		0.0000
Worker	0.0668	0.0894	0.9366	1.7800e-003	0.1453	1.4500e-003	0.1468	0.0385	1.3300e-003	0.0399		156.0140	156.0140	9.4300e-003		156.2121
Total	0.1827	1.8795	2.2878	5.8500e-003	0.2402	0.0301	0.2703	0.0645	0.0276	0.0922		569.8379	569.8379	0.0128		570.1077

3.3 Site Preparation - 2015

Unmitigated Construction On-Site

	ROG	NOx	CO	SO2	Fugitive PM10	Exhaust PM10	PM10 Total	Fugitive PM2.5	Exhaust PM2.5	PM2.5 Total	Bio- CO2	NBio- CO2	Total CO2	CH4	N2O	CO2e
Category	lb/day										lb/day					
Fugitive Dust					0.3182	0.0000	0.3182	0.0344	0.0000	0.0344			0.0000			0.0000
Off-Road	2.8203	32.4699	18.6797	0.0239		1.5973	1.5973		1.4695	1.4695		2,508.1983	2,508.1983	0.7488		2,523.9231
Total	2.8203	32.4699	18.6797	0.0239	0.3182	1.5973	1.9155	0.0344	1.4695	1.5039		2,508.1983	2,508.1983	0.7488		2,523.9231

3.3 Site Preparation - 2015

Unmitigated Construction Off-Site

	ROG	NOx	CO	SO2	Fugitive PM10	Exhaust PM10	PM10 Total	Fugitive PM2.5	Exhaust PM2.5	PM2.5 Total	Bio- CO2	NBio- CO2	Total CO2	CH4	N2O	CO2e
Category	lb/day										lb/day					
Hauling	0.0000	0.0000	0.0000	0.0000	0.0000	0.0000	0.0000	0.0000	0.0000	0.0000		0.0000	0.0000	0.0000		0.0000
Vendor	0.0000	0.0000	0.0000	0.0000	0.0000	0.0000	0.0000	0.0000	0.0000	0.0000		0.0000	0.0000	0.0000		0.0000
Worker	0.0411	0.0550	0.5764	1.1000e-003	0.0894	8.9000e-004	0.0903	0.0237	8.2000e-004	0.0245		96.0086	96.0086	5.8000e-003		96.1305
Total	0.0411	0.0550	0.5764	1.1000e-003	0.0894	8.9000e-004	0.0903	0.0237	8.2000e-004	0.0245		96.0086	96.0086	5.8000e-003		96.1305

Mitigated Construction On-Site

	ROG	NOx	CO	SO2	Fugitive PM10	Exhaust PM10	PM10 Total	Fugitive PM2.5	Exhaust PM2.5	PM2.5 Total	Bio- CO2	NBio- CO2	Total CO2	CH4	N2O	CO2e
Category	lb/day										lb/day					
Fugitive Dust					0.1432	0.0000	0.1432	0.0155	0.0000	0.0155			0.0000			0.0000
Off-Road	2.8203	32.4699	18.6797	0.0239		1.5973	1.5973		1.4695	1.4695	0.0000	2,508.1983	2,508.1983	0.7488		2,523.9231
Total	2.8203	32.4699	18.6797	0.0239	0.1432	1.5973	1.7405	0.0155	1.4695	1.4850	0.0000	2,508.1983	2,508.1983	0.7488		2,523.9231

3.3 Site Preparation - 2015

Mitigated Construction Off-Site

	ROG	NOx	CO	SO2	Fugitive PM10	Exhaust PM10	PM10 Total	Fugitive PM2.5	Exhaust PM2.5	PM2.5 Total	Bio- CO2	NBio- CO2	Total CO2	CH4	N2O	CO2e
Category	lb/day										lb/day					
Hauling	0.0000	0.0000	0.0000	0.0000	0.0000	0.0000	0.0000	0.0000	0.0000	0.0000		0.0000	0.0000	0.0000		0.0000
Vendor	0.0000	0.0000	0.0000	0.0000	0.0000	0.0000	0.0000	0.0000	0.0000	0.0000		0.0000	0.0000	0.0000		0.0000
Worker	0.0411	0.0550	0.5764	1.1000e-003	0.0894	8.9000e-004	0.0903	0.0237	8.2000e-004	0.0245		96.0086	96.0086	5.8000e-003		96.1305
Total	0.0411	0.0550	0.5764	1.1000e-003	0.0894	8.9000e-004	0.0903	0.0237	8.2000e-004	0.0245		96.0086	96.0086	5.8000e-003		96.1305

3.4 Grading - 2015

Unmitigated Construction On-Site

	ROG	NOx	CO	SO2	Fugitive PM10	Exhaust PM10	PM10 Total	Fugitive PM2.5	Exhaust PM2.5	PM2.5 Total	Bio- CO2	NBio- CO2	Total CO2	CH4	N2O	CO2e
Category	lb/day										lb/day					
Fugitive Dust					6.0737	0.0000	6.0737	3.3163	0.0000	3.3163			0.0000			0.0000
Off-Road	2.9656	31.2611	20.2019	0.0206		1.7524	1.7524		1.6122	1.6122		2,164.1012	2,164.1012	0.6461		2,177.6687
Total	2.9656	31.2611	20.2019	0.0206	6.0737	1.7524	7.8262	3.3163	1.6122	4.9286		2,164.1012	2,164.1012	0.6461		2,177.6687

3.4 Grading - 2015

Unmitigated Construction Off-Site

	ROG	NOx	CO	SO2	Fugitive PM10	Exhaust PM10	PM10 Total	Fugitive PM2.5	Exhaust PM2.5	PM2.5 Total	Bio- CO2	NBio- CO2	Total CO2	CH4	N2O	CO2e
Category	lb/day										lb/day					
Hauling	0.2792	4.3111	3.2539	9.8000e-003	0.4203	0.0689	0.4892	0.1096	0.0634	0.1730		996.5943	996.5943	8.2200e-003		996.7669
Vendor	0.0000	0.0000	0.0000	0.0000	0.0000	0.0000	0.0000	0.0000	0.0000	0.0000		0.0000	0.0000	0.0000		0.0000
Worker	0.0514	0.0688	0.7205	1.3700e-003	0.1118	1.1200e-003	0.1129	0.0296	1.0200e-003	0.0307		120.0108	120.0108	7.2600e-003		120.1631
Total	0.3306	4.3799	3.9744	0.0112	0.5321	0.0700	0.6021	0.1393	0.0644	0.2037		1,116.6051	1,116.6051	0.0155		1,116.9301

Mitigated Construction On-Site

	ROG	NOx	CO	SO2	Fugitive PM10	Exhaust PM10	PM10 Total	Fugitive PM2.5	Exhaust PM2.5	PM2.5 Total	Bio- CO2	NBio- CO2	Total CO2	CH4	N2O	CO2e
Category	lb/day										lb/day					
Fugitive Dust					2.7332	0.0000	2.7332	1.4923	0.0000	1.4923			0.0000			0.0000
Off-Road	2.9656	31.2611	20.2019	0.0206		1.7524	1.7524		1.6122	1.6122	0.0000	2,164.1012	2,164.1012	0.6461		2,177.6687
Total	2.9656	31.2611	20.2019	0.0206	2.7332	1.7524	4.4856	1.4923	1.6122	3.1046	0.0000	2,164.1012	2,164.1012	0.6461		2,177.6687

3.4 Grading - 2015**Mitigated Construction Off-Site**

	ROG	NOx	CO	SO2	Fugitive PM10	Exhaust PM10	PM10 Total	Fugitive PM2.5	Exhaust PM2.5	PM2.5 Total	Bio- CO2	NBio- CO2	Total CO2	CH4	N2O	CO2e
Category	lb/day										lb/day					
Hauling	0.2792	4.3111	3.2539	9.8000e-003	0.4203	0.0689	0.4892	0.1096	0.0634	0.1730		996.5943	996.5943	8.2200e-003		996.7669
Vendor	0.0000	0.0000	0.0000	0.0000	0.0000	0.0000	0.0000	0.0000	0.0000	0.0000		0.0000	0.0000	0.0000		0.0000
Worker	0.0514	0.0688	0.7205	1.3700e-003	0.1118	1.1200e-003	0.1129	0.0296	1.0200e-003	0.0307		120.0108	120.0108	7.2600e-003		120.1631
Total	0.3306	4.3799	3.9744	0.0112	0.5321	0.0700	0.6021	0.1393	0.0644	0.2037		1,116.6051	1,116.6051	0.0155		1,116.9301

3.4 Grading - 2016**Unmitigated Construction On-Site**

	ROG	NOx	CO	SO2	Fugitive PM10	Exhaust PM10	PM10 Total	Fugitive PM2.5	Exhaust PM2.5	PM2.5 Total	Bio- CO2	NBio- CO2	Total CO2	CH4	N2O	CO2e
Category	lb/day										lb/day					
Fugitive Dust					6.0737	0.0000	6.0737	3.3163	0.0000	3.3163			0.0000			0.0000
Off-Road	2.8530	29.9470	19.6345	0.0206		1.6671	1.6671		1.5337	1.5337		2,139.2742	2,139.2742	0.6453		2,152.8251
Total	2.8530	29.9470	19.6345	0.0206	6.0737	1.6671	7.7408	3.3163	1.5337	4.8501		2,139.2742	2,139.2742	0.6453		2,152.8251

3.4 Grading - 2016

Unmitigated Construction Off-Site

	ROG	NOx	CO	SO2	Fugitive PM10	Exhaust PM10	PM10 Total	Fugitive PM2.5	Exhaust PM2.5	PM2.5 Total	Bio- CO2	NBio- CO2	Total CO2	CH4	N2O	CO2e
Category	lb/day										lb/day					
Hauling	0.2448	3.8086	3.0262	9.7900e-003	0.3856	0.0546	0.4402	0.1011	0.0502	0.1514		985.5791	985.5791	7.4000e-003		985.7344
Vendor	0.0000	0.0000	0.0000	0.0000	0.0000	0.0000	0.0000	0.0000	0.0000	0.0000		0.0000	0.0000	0.0000		0.0000
Worker	0.0463	0.0622	0.6514	1.3700e-003	0.1118	1.0600e-003	0.1128	0.0296	9.7000e-004	0.0306		116.0031	116.0031	6.6900e-003		116.1436
Total	0.2911	3.8707	3.6776	0.0112	0.4973	0.0557	0.5530	0.1308	0.0512	0.1820		1,101.5822	1,101.5822	0.0141		1,101.8780

Mitigated Construction On-Site

	ROG	NOx	CO	SO2	Fugitive PM10	Exhaust PM10	PM10 Total	Fugitive PM2.5	Exhaust PM2.5	PM2.5 Total	Bio- CO2	NBio- CO2	Total CO2	CH4	N2O	CO2e
Category	lb/day										lb/day					
Fugitive Dust					2.7332	0.0000	2.7332	1.4923	0.0000	1.4923			0.0000			0.0000
Off-Road	2.8530	29.9470	19.6345	0.0206		1.6671	1.6671		1.5337	1.5337	0.0000	2,139.2742	2,139.2742	0.6453		2,152.8251
Total	2.8530	29.9470	19.6345	0.0206	2.7332	1.6671	4.4003	1.4923	1.5337	3.0261	0.0000	2,139.2742	2,139.2742	0.6453		2,152.8251

3.4 Grading - 2016

Mitigated Construction Off-Site

	ROG	NOx	CO	SO2	Fugitive PM10	Exhaust PM10	PM10 Total	Fugitive PM2.5	Exhaust PM2.5	PM2.5 Total	Bio- CO2	NBio- CO2	Total CO2	CH4	N2O	CO2e
Category	lb/day										lb/day					
Hauling	0.2448	3.8086	3.0262	9.7900e-003	0.3856	0.0546	0.4402	0.1011	0.0502	0.1514		985.5791	985.5791	7.4000e-003		985.7344
Vendor	0.0000	0.0000	0.0000	0.0000	0.0000	0.0000	0.0000	0.0000	0.0000	0.0000		0.0000	0.0000	0.0000		0.0000
Worker	0.0463	0.0622	0.6514	1.3700e-003	0.1118	1.0600e-003	0.1128	0.0296	9.7000e-004	0.0306		116.0031	116.0031	6.6900e-003		116.1436
Total	0.2911	3.8707	3.6776	0.0112	0.4973	0.0557	0.5530	0.1308	0.0512	0.1820		1,101.5822	1,101.5822	0.0141		1,101.8780

3.5 Building Construction - 2016

Unmitigated Construction On-Site

	ROG	NOx	CO	SO2	Fugitive PM10	Exhaust PM10	PM10 Total	Fugitive PM2.5	Exhaust PM2.5	PM2.5 Total	Bio- CO2	NBio- CO2	Total CO2	CH4	N2O	CO2e
Category	lb/day										lb/day					
Off-Road	3.6984	24.6320	16.7166	0.0249		1.6257	1.6257		1.5569	1.5569		2,352.2239	2,352.2239	0.5420		2,363.6057
Total	3.6984	24.6320	16.7166	0.0249		1.6257	1.6257		1.5569	1.5569		2,352.2239	2,352.2239	0.5420		2,363.6057

3.5 Building Construction - 2016

Unmitigated Construction Off-Site

	ROG	NOx	CO	SO2	Fugitive PM10	Exhaust PM10	PM10 Total	Fugitive PM2.5	Exhaust PM2.5	PM2.5 Total	Bio- CO2	NBio- CO2	Total CO2	CH4	N2O	CO2e	
Category	lb/day										lb/day						
Hauling	0.0000	0.0000	0.0000	0.0000	0.0000	0.0000	0.0000	0.0000	0.0000	0.0000		0.0000	0.0000	0.0000			0.0000
Vendor	0.1580	1.5250	2.1043	3.7100e-003	0.1060	0.0235	0.1295	0.0302	0.0216	0.0518		371.2666	371.2666	2.8300e-003			371.3260
Worker	0.1946	0.2611	2.7358	5.7600e-003	0.4695	4.4400e-003	0.4739	0.1245	4.0800e-003	0.1286		487.2131	487.2131	0.0281			487.8032
Total	0.3526	1.7861	4.8401	9.4700e-003	0.5755	0.0279	0.6034	0.1547	0.0257	0.1804		858.4797	858.4797	0.0309			859.1291

Mitigated Construction On-Site

	ROG	NOx	CO	SO2	Fugitive PM10	Exhaust PM10	PM10 Total	Fugitive PM2.5	Exhaust PM2.5	PM2.5 Total	Bio- CO2	NBio- CO2	Total CO2	CH4	N2O	CO2e	
Category	lb/day										lb/day						
Off-Road	3.6984	24.6320	16.7166	0.0249		1.6257	1.6257		1.5569	1.5569	0.0000	2,352.2239	2,352.2239	0.5420			2,363.6057
Total	3.6984	24.6320	16.7166	0.0249		1.6257	1.6257		1.5569	1.5569	0.0000	2,352.2239	2,352.2239	0.5420			2,363.6057

3.5 Building Construction - 2016

Mitigated Construction Off-Site

	ROG	NOx	CO	SO2	Fugitive PM10	Exhaust PM10	PM10 Total	Fugitive PM2.5	Exhaust PM2.5	PM2.5 Total	Bio- CO2	NBio- CO2	Total CO2	CH4	N2O	CO2e	
Category	lb/day										lb/day						
Hauling	0.0000	0.0000	0.0000	0.0000	0.0000	0.0000	0.0000	0.0000	0.0000	0.0000		0.0000	0.0000	0.0000			0.0000
Vendor	0.1580	1.5250	2.1043	3.7100e-003	0.1060	0.0235	0.1295	0.0302	0.0216	0.0518		371.2666	371.2666	2.8300e-003			371.3260
Worker	0.1946	0.2611	2.7358	5.7600e-003	0.4695	4.4400e-003	0.4739	0.1245	4.0800e-003	0.1286		487.2131	487.2131	0.0281			487.8032
Total	0.3526	1.7861	4.8401	9.4700e-003	0.5755	0.0279	0.6034	0.1547	0.0257	0.1804		858.4797	858.4797	0.0309			859.1291

3.6 Paving - 2016

Unmitigated Construction On-Site

	ROG	NOx	CO	SO2	Fugitive PM10	Exhaust PM10	PM10 Total	Fugitive PM2.5	Exhaust PM2.5	PM2.5 Total	Bio- CO2	NBio- CO2	Total CO2	CH4	N2O	CO2e	
Category	lb/day										lb/day						
Off-Road	1.7811	17.9300	12.1433	0.0176		1.1252	1.1252		1.0363	1.0363		1,804.8600	1,804.8600	0.5344			1,816.0828
Paving	0.2620					0.0000	0.0000		0.0000	0.0000			0.0000				0.0000
Total	2.0431	17.9300	12.1433	0.0176		1.1252	1.1252		1.0363	1.0363		1,804.8600	1,804.8600	0.5344			1,816.0828

3.6 Paving - 2016**Unmitigated Construction Off-Site**

	ROG	NOx	CO	SO2	Fugitive PM10	Exhaust PM10	PM10 Total	Fugitive PM2.5	Exhaust PM2.5	PM2.5 Total	Bio- CO2	NBio- CO2	Total CO2	CH4	N2O	CO2e
Category	lb/day										lb/day					
Hauling	0.0000	0.0000	0.0000	0.0000	0.0000	0.0000	0.0000	0.0000	0.0000	0.0000		0.0000	0.0000	0.0000		0.0000
Vendor	0.0000	0.0000	0.0000	0.0000	0.0000	0.0000	0.0000	0.0000	0.0000	0.0000		0.0000	0.0000	0.0000		0.0000
Worker	0.0695	0.0932	0.9771	2.0600e-003	0.1677	1.5900e-003	0.1693	0.0445	1.4600e-003	0.0459		174.0047	174.0047	0.0100		174.2154
Total	0.0695	0.0932	0.9771	2.0600e-003	0.1677	1.5900e-003	0.1693	0.0445	1.4600e-003	0.0459		174.0047	174.0047	0.0100		174.2154

Mitigated Construction On-Site

	ROG	NOx	CO	SO2	Fugitive PM10	Exhaust PM10	PM10 Total	Fugitive PM2.5	Exhaust PM2.5	PM2.5 Total	Bio- CO2	NBio- CO2	Total CO2	CH4	N2O	CO2e
Category	lb/day										lb/day					
Off-Road	1.7811	17.9300	12.1433	0.0176		1.1252	1.1252		1.0363	1.0363	0.0000	1,804.8600	1,804.8600	0.5344		1,816.0828
Paving	0.2620					0.0000	0.0000		0.0000	0.0000			0.0000			0.0000
Total	2.0431	17.9300	12.1433	0.0176		1.1252	1.1252		1.0363	1.0363	0.0000	1,804.8600	1,804.8600	0.5344		1,816.0828

3.6 Paving - 2016

Mitigated Construction Off-Site

	ROG	NOx	CO	SO2	Fugitive PM10	Exhaust PM10	PM10 Total	Fugitive PM2.5	Exhaust PM2.5	PM2.5 Total	Bio- CO2	NBio- CO2	Total CO2	CH4	N2O	CO2e	
Category	lb/day										lb/day						
Hauling	0.0000	0.0000	0.0000	0.0000	0.0000	0.0000	0.0000	0.0000	0.0000	0.0000		0.0000	0.0000	0.0000			0.0000
Vendor	0.0000	0.0000	0.0000	0.0000	0.0000	0.0000	0.0000	0.0000	0.0000	0.0000		0.0000	0.0000	0.0000			0.0000
Worker	0.0695	0.0932	0.9771	2.0600e-003	0.1677	1.5900e-003	0.1693	0.0445	1.4600e-003	0.0459		174.0047	174.0047	0.0100			174.2154
Total	0.0695	0.0932	0.9771	2.0600e-003	0.1677	1.5900e-003	0.1693	0.0445	1.4600e-003	0.0459		174.0047	174.0047	0.0100			174.2154

3.6 Paving - 2017

Unmitigated Construction On-Site

	ROG	NOx	CO	SO2	Fugitive PM10	Exhaust PM10	PM10 Total	Fugitive PM2.5	Exhaust PM2.5	PM2.5 Total	Bio- CO2	NBio- CO2	Total CO2	CH4	N2O	CO2e	
Category	lb/day										lb/day						
Off-Road	1.6402	16.4619	12.0566	0.0176		1.0230	1.0230		0.9423	0.9423		1,777.4745	1,777.4745	0.5344			1,788.6966
Paving	0.2620					0.0000	0.0000		0.0000	0.0000			0.0000				0.0000
Total	1.9022	16.4619	12.0566	0.0176		1.0230	1.0230		0.9423	0.9423		1,777.4745	1,777.4745	0.5344			1,788.6966

3.6 Paving - 2017

Unmitigated Construction Off-Site

	ROG	NOx	CO	SO2	Fugitive PM10	Exhaust PM10	PM10 Total	Fugitive PM2.5	Exhaust PM2.5	PM2.5 Total	Bio- CO2	NBio- CO2	Total CO2	CH4	N2O	CO2e	
Category	lb/day										lb/day						
Hauling	0.0000	0.0000	0.0000	0.0000	0.0000	0.0000	0.0000	0.0000	0.0000	0.0000		0.0000	0.0000	0.0000			0.0000
Vendor	0.0000	0.0000	0.0000	0.0000	0.0000	0.0000	0.0000	0.0000	0.0000	0.0000		0.0000	0.0000	0.0000			0.0000
Worker	0.0623	0.0843	0.8817	2.0600e-003	0.1677	1.5200e-003	0.1692	0.0445	1.4000e-003	0.0459		167.4803	167.4803	9.2800e-003			167.6751
Total	0.0623	0.0843	0.8817	2.0600e-003	0.1677	1.5200e-003	0.1692	0.0445	1.4000e-003	0.0459		167.4803	167.4803	9.2800e-003			167.6751

Mitigated Construction On-Site

	ROG	NOx	CO	SO2	Fugitive PM10	Exhaust PM10	PM10 Total	Fugitive PM2.5	Exhaust PM2.5	PM2.5 Total	Bio- CO2	NBio- CO2	Total CO2	CH4	N2O	CO2e	
Category	lb/day										lb/day						
Off-Road	1.6402	16.4619	12.0566	0.0176		1.0230	1.0230		0.9423	0.9423	0.0000	1,777.4745	1,777.4745	0.5344			1,788.6966
Paving	0.2620					0.0000	0.0000		0.0000	0.0000			0.0000				0.0000
Total	1.9022	16.4619	12.0566	0.0176		1.0230	1.0230		0.9423	0.9423	0.0000	1,777.4745	1,777.4745	0.5344			1,788.6966

3.6 Paving - 2017

Mitigated Construction Off-Site

	ROG	NOx	CO	SO2	Fugitive PM10	Exhaust PM10	PM10 Total	Fugitive PM2.5	Exhaust PM2.5	PM2.5 Total	Bio- CO2	NBio- CO2	Total CO2	CH4	N2O	CO2e
Category	lb/day										lb/day					
Hauling	0.0000	0.0000	0.0000	0.0000	0.0000	0.0000	0.0000	0.0000	0.0000	0.0000		0.0000	0.0000	0.0000		0.0000
Vendor	0.0000	0.0000	0.0000	0.0000	0.0000	0.0000	0.0000	0.0000	0.0000	0.0000		0.0000	0.0000	0.0000		0.0000
Worker	0.0623	0.0843	0.8817	2.0600e-003	0.1677	1.5200e-003	0.1692	0.0445	1.4000e-003	0.0459		167.4803	167.4803	9.2800e-003		167.6751
Total	0.0623	0.0843	0.8817	2.0600e-003	0.1677	1.5200e-003	0.1692	0.0445	1.4000e-003	0.0459		167.4803	167.4803	9.2800e-003		167.6751

3.7 Architectural Coating - 2017

Unmitigated Construction On-Site

	ROG	NOx	CO	SO2	Fugitive PM10	Exhaust PM10	PM10 Total	Fugitive PM2.5	Exhaust PM2.5	PM2.5 Total	Bio- CO2	NBio- CO2	Total CO2	CH4	N2O	CO2e
Category	lb/day										lb/day					
Archit. Coating	14.1975					0.0000	0.0000		0.0000	0.0000			0.0000			0.0000
Off-Road	0.3323	2.1850	1.8681	2.9700e-003		0.1733	0.1733		0.1733	0.1733		281.4481	281.4481	0.0297		282.0721
Total	14.5298	2.1850	1.8681	2.9700e-003		0.1733	0.1733		0.1733	0.1733		281.4481	281.4481	0.0297		282.0721

3.7 Architectural Coating - 2017

Unmitigated Construction Off-Site

	ROG	NOx	CO	SO2	Fugitive PM10	Exhaust PM10	PM10 Total	Fugitive PM2.5	Exhaust PM2.5	PM2.5 Total	Bio- CO2	NBio- CO2	Total CO2	CH4	N2O	CO2e	
Category	lb/day										lb/day						
Hauling	0.0000	0.0000	0.0000	0.0000	0.0000	0.0000	0.0000	0.0000	0.0000	0.0000		0.0000	0.0000	0.0000			0.0000
Vendor	0.0000	0.0000	0.0000	0.0000	0.0000	0.0000	0.0000	0.0000	0.0000	0.0000		0.0000	0.0000	0.0000			0.0000
Worker	0.0332	0.0450	0.4702	1.1000e-003	0.0894	8.1000e-004	0.0902	0.0237	7.5000e-004	0.0245		89.3228	89.3228	4.9500e-003			89.4267
Total	0.0332	0.0450	0.4702	1.1000e-003	0.0894	8.1000e-004	0.0902	0.0237	7.5000e-004	0.0245		89.3228	89.3228	4.9500e-003			89.4267

Mitigated Construction On-Site

	ROG	NOx	CO	SO2	Fugitive PM10	Exhaust PM10	PM10 Total	Fugitive PM2.5	Exhaust PM2.5	PM2.5 Total	Bio- CO2	NBio- CO2	Total CO2	CH4	N2O	CO2e	
Category	lb/day										lb/day						
Archit. Coating	14.1975					0.0000	0.0000		0.0000	0.0000			0.0000				0.0000
Off-Road	0.3323	2.1850	1.8681	2.9700e-003		0.1733	0.1733		0.1733	0.1733	0.0000	281.4481	281.4481	0.0297			282.0721
Total	14.5298	2.1850	1.8681	2.9700e-003		0.1733	0.1733		0.1733	0.1733	0.0000	281.4481	281.4481	0.0297			282.0721

3.7 Architectural Coating - 2017

Mitigated Construction Off-Site

	ROG	NOx	CO	SO2	Fugitive PM10	Exhaust PM10	PM10 Total	Fugitive PM2.5	Exhaust PM2.5	PM2.5 Total	Bio- CO2	NBio- CO2	Total CO2	CH4	N2O	CO2e	
Category	lb/day										lb/day						
Hauling	0.0000	0.0000	0.0000	0.0000	0.0000	0.0000	0.0000	0.0000	0.0000	0.0000		0.0000	0.0000	0.0000			0.0000
Vendor	0.0000	0.0000	0.0000	0.0000	0.0000	0.0000	0.0000	0.0000	0.0000	0.0000		0.0000	0.0000	0.0000			0.0000
Worker	0.0332	0.0450	0.4702	1.1000e-003	0.0894	8.1000e-004	0.0902	0.0237	7.5000e-004	0.0245		89.3228	89.3228	4.9500e-003			89.4267
Total	0.0332	0.0450	0.4702	1.1000e-003	0.0894	8.1000e-004	0.0902	0.0237	7.5000e-004	0.0245		89.3228	89.3228	4.9500e-003			89.4267

4.0 Operational Detail - Mobile

4.1 Mitigation Measures Mobile

	ROG	NOx	CO	SO2	Fugitive PM10	Exhaust PM10	PM10 Total	Fugitive PM2.5	Exhaust PM2.5	PM2.5 Total	Bio- CO2	NBio- CO2	Total CO2	CH4	N2O	CO2e
Category	lb/day										lb/day					
Mitigated	2.5466	7.1103	27.6559	0.0657	4.4988	0.0996	4.5984	1.2030	0.0917	1.2947		5,620.9937	5,620.9937	0.2338		5,625.9035
Unmitigated	2.5466	7.1103	27.6559	0.0657	4.4988	0.0996	4.5984	1.2030	0.0917	1.2947		5,620.9937	5,620.9937	0.2338		5,625.9035

4.2 Trip Summary Information

Land Use	Average Daily Trip Rate			Unmitigated	Mitigated
	Weekday	Saturday	Sunday	Annual VMT	Annual VMT
Government (Civic Center)	156.35	0.00	0.00	344,882	344,882
Junior College (2Yr)	541.55	221.23	23.84	1,274,088	1,274,088
Parking Lot	0.00	0.00	0.00		
Total	697.91	221.23	23.84	1,618,970	1,618,970

4.3 Trip Type Information

Land Use	Miles			Trip %			Trip Purpose %		
	H-W or C-W	H-S or C-C	H-O or C-NW	H-W or C-W	H-S or C-C	H-O or C-NW	Primary	Diverted	Pass-by
Government (Civic Center)	16.60	8.40	6.90	75.00	20.00	5.00	50	34	16
Junior College (2Yr)	16.60	8.40	6.90	6.40	88.60	5.00	92	7	1
Parking Lot	16.60	8.40	6.90	0.00	0.00	0.00	0	0	0

LDA	LDT1	LDT2	MDV	LHD1	LHD2	MHD	HHD	OBUS	UBUS	MCY	SBUS	MH
0.532559	0.058242	0.178229	0.125155	0.038934	0.006273	0.016761	0.032323	0.002478	0.003154	0.003685	0.000544	0.001663

5.0 Energy Detail

5.1 Fleet Mix

Historical Energy Use: N

5.1 Mitigation Measures Energy

Exceed Title 24

Install High Efficiency Lighting

	ROG	NOx	CO	SO2	Fugitive PM10	Exhaust PM10	PM10 Total	Fugitive PM2.5	Exhaust PM2.5	PM2.5 Total	Bio- CO2	NBio- CO2	Total CO2	CH4	N2O	CO2e
Category	lb/day										lb/day					
NaturalGas Mitigated	9.2800e-003	0.0844	0.0709	5.1000e-004		6.4100e-003	6.4100e-003		6.4100e-003	6.4100e-003		101.2281	101.2281	1.9400e-003	1.8600e-003	101.8442
NaturalGas Unmitigated	0.0108	0.0984	0.0826	5.9000e-004		7.4700e-003	7.4700e-003		7.4700e-003	7.4700e-003		118.0164	118.0164	2.2600e-003	2.1600e-003	118.7347

5.2 Energy by Land Use - NaturalGas

Unmitigated

	NaturalGas Use	ROG	NOx	CO	SO2	Fugitive PM10	Exhaust PM10	PM10 Total	Fugitive PM2.5	Exhaust PM2.5	PM2.5 Total	Bio- CO2	NBio- CO2	Total CO2	CH4	N2O	CO2e
Land Use	kBTU/yr	lb/day										lb/day					
Junior College (2Yr)	856.005	9.2300e-003	0.0839	0.0705	5.0000e-004		6.3800e-003	6.3800e-003		6.3800e-003	6.3800e-003		100.7065	100.7065	1.9300e-003	1.8500e-003	101.3194
Parking Lot	0	0.0000	0.0000	0.0000	0.0000		0.0000	0.0000		0.0000	0.0000		0.0000	0.0000	0.0000	0.0000	0.0000
Government (Civic Center)	147.134	1.5900e-003	0.0144	0.0121	9.0000e-005		1.1000e-003	1.1000e-003		1.1000e-003	1.1000e-003		17.3099	17.3099	3.3000e-004	3.2000e-004	17.4153
Total		0.0108	0.0983	0.0826	5.9000e-004		7.4800e-003	7.4800e-003		7.4800e-003	7.4800e-003		118.0164	118.0164	2.2600e-003	2.1700e-003	118.7347

5.2 Energy by Land Use - NaturalGas

Mitigated

	NaturalGas Use	ROG	NOx	CO	SO2	Fugitive PM10	Exhaust PM10	PM10 Total	Fugitive PM2.5	Exhaust PM2.5	PM2.5 Total	Bio- CO2	NBio- CO2	Total CO2	CH4	N2O	CO2e
Land Use	kBTU/yr	lb/day										lb/day					
Parking Lot	0	0.0000	0.0000	0.0000	0.0000		0.0000	0.0000		0.0000	0.0000		0.0000	0.0000	0.0000	0.0000	0.0000
Government (Civic Center)	0.119395	1.2900e-003	0.0117	9.8300e-003	7.0000e-005		8.9000e-004	8.9000e-004		8.9000e-004	8.9000e-004		14.0465	14.0465	2.7000e-004	2.6000e-004	14.1320
Junior College (2Yr)	0.741044	7.9900e-003	0.0727	0.0610	4.4000e-004		5.5200e-003	5.5200e-003		5.5200e-003	5.5200e-003		87.1816	87.1816	1.6700e-003	1.6000e-003	87.7122
Total		9.2800e-003	0.0844	0.0709	5.1000e-004		6.4100e-003	6.4100e-003		6.4100e-003	6.4100e-003		101.2281	101.2281	1.9400e-003	1.8600e-003	101.8442

6.0 Area Detail

6.1 Mitigation Measures Area

	ROG	NOx	CO	SO2	Fugitive PM10	Exhaust PM10	PM10 Total	Fugitive PM2.5	Exhaust PM2.5	PM2.5 Total	Bio- CO2	NBio- CO2	Total CO2	CH4	N2O	CO2e
Category	lb/day										lb/day					
Mitigated	2.1750	2.1000e-004	0.0223	0.0000		8.0000e-005	8.0000e-005		8.0000e-005	8.0000e-005		0.0469	0.0469	1.3000e-004		0.0496
Unmitigated	2.1750	2.1000e-004	0.0223	0.0000		8.0000e-005	8.0000e-005		8.0000e-005	8.0000e-005		0.0469	0.0469	1.3000e-004		0.0496

6.2 Area by SubCategory

Unmitigated

	ROG	NOx	CO	SO2	Fugitive PM10	Exhaust PM10	PM10 Total	Fugitive PM2.5	Exhaust PM2.5	PM2.5 Total	Bio- CO2	NBio- CO2	Total CO2	CH4	N2O	CO2e
SubCategory	lb/day										lb/day					
Architectural Coating	0.1750					0.0000	0.0000		0.0000	0.0000			0.0000			0.0000
Consumer Products	1.9978					0.0000	0.0000		0.0000	0.0000			0.0000			0.0000
Landscaping	2.1500e-003	2.1000e-004	0.0223	0.0000		8.0000e-005	8.0000e-005		8.0000e-005	8.0000e-005		0.0469	0.0469	1.3000e-004		0.0496
Total	2.1750	2.1000e-004	0.0223	0.0000		8.0000e-005	8.0000e-005		8.0000e-005	8.0000e-005		0.0469	0.0469	1.3000e-004		0.0496

Mitigated

	ROG	NOx	CO	SO2	Fugitive PM10	Exhaust PM10	PM10 Total	Fugitive PM2.5	Exhaust PM2.5	PM2.5 Total	Bio- CO2	NBio- CO2	Total CO2	CH4	N2O	CO2e
SubCategory	lb/day										lb/day					
Architectural Coating	0.1750					0.0000	0.0000		0.0000	0.0000			0.0000			0.0000
Consumer Products	1.9978					0.0000	0.0000		0.0000	0.0000			0.0000			0.0000
Landscaping	2.1500e-003	2.1000e-004	0.0223	0.0000		8.0000e-005	8.0000e-005		8.0000e-005	8.0000e-005		0.0469	0.0469	1.3000e-004		0.0496
Total	2.1750	2.1000e-004	0.0223	0.0000		8.0000e-005	8.0000e-005		8.0000e-005	8.0000e-005		0.0469	0.0469	1.3000e-004		0.0496

7.0 Water Detail

7.1 Mitigation Measures Water

Apply Water Conservation Strategy

Install Low Flow Bathroom Faucet

Install Low Flow Toilet

Use Water Efficient Landscaping

8.0 Waste Detail

8.1 Mitigation Measures Waste

Institute Recycling and Composting Services

9.0 Operational Offroad

Equipment Type	Number	Hours/Day	Days/Year	Horse Power	Load Factor	Fuel Type
----------------	--------	-----------	-----------	-------------	-------------	-----------

10.0 Vegetation

SMC Malibu Campus
Los Angeles-South Coast County, Summer

1.0 Project Characteristics

1.1 Land Usage

Land Uses	Size	Metric	Lot Acreage	Floor Surface Area	Population
Junior College (2Yr)	19.70	1000sqft	1.45	19,700.00	0
Government (Civic Center)	5.60	1000sqft	0.00	5,600.00	0
Parking Lot	189.00	Space	1.50	75,600.00	0

1.2 Other Project Characteristics

Urbanization	Urban	Wind Speed (m/s)	2.2	Precipitation Freq (Days)	33
Climate Zone	8			Operational Year	2017
Utility Company	Southern California Edison				
CO2 Intensity (lb/MWhr)	630.89	CH4 Intensity (lb/MWhr)	0.029	N2O Intensity (lb/MWhr)	0.006

1.3 User Entered Comments & Non-Default Data

Project Characteristics -

Land Use - Total lot area is 2.95 acres (1.45 acres bldg., landscape and hardscape) and 1.5 acres of surface parking.

Construction Phase - Custom construction schedule with projected occupancy by 2017.

Grading - Site preparation to involve removal of existing landscaping in parking areas and in landscaped quad.

Demolition -

Land Use Change -

Sequestration - 76 new trees to be planted on site per landscape plan (Figure 2.21, Planting Plan)

Construction Off-road Equipment Mitigation -

Mobile Land Use Mitigation -

Energy Mitigation -

Water Mitigation - Water conservation bathroom fixtures to be mandatory per SMC conservation strategy. Outdoor water irrigation estimated per ETWU (31.73gpd/1,000sf) and 34,354 sf of irrigated area.

Waste Mitigation - Solid Waste Recycling per SMC, LA County and City of Malibu policies.

Table Name	Column Name	Default Value	New Value
tblConstructionPhase	NumDays	10.00	45.00
tblConstructionPhase	NumDays	220.00	229.00
tblConstructionPhase	NumDays	6.00	40.00
tblConstructionPhase	NumDays	10.00	15.00
tblConstructionPhase	NumDays	3.00	5.00
tblConstructionPhase	PhaseEndDate	11/27/2015	11/28/2015
tblConstructionPhase	PhaseEndDate	12/4/2015	12/6/2015
tblConstructionPhase	PhaseStartDate	12/7/2015	12/6/2015
tblGrading	AcresOfGrading	20.00	1.50
tblGrading	AcresOfGrading	7.50	1.50
tblGrading	MaterialImported	0.00	4,200.00
tblLandUse	LotAcreage	0.45	1.45
tblLandUse	LotAcreage	0.13	0.00
tblLandUse	LotAcreage	1.70	1.50
tblProjectCharacteristics	OperationalYear	2014	2017
tblSequestration	NumberOfNewTrees	0.00	76.00

2.0 Emissions Summary

2.1 Overall Construction (Maximum Daily Emission)

Unmitigated Construction

	ROG	NOx	CO	SO2	Fugitive PM10	Exhaust PM10	PM10 Total	Fugitive PM2.5	Exhaust PM2.5	PM2.5 Total	Bio- CO2	NBio- CO2	Total CO2	CH4	N2O	CO2e
Year	lb/day										lb/day					
2015	6.1374	68.0070	43.0969	0.0569	7.0134	3.4204	10.4338	3.5137	3.1467	6.6604	0.0000	5,900.088 1	5,900.088 1	1.4161	0.0000	5,929.825 3
2016	4.0287	33.6822	22.9392	0.0347	6.5711	1.7226	8.2937	3.4471	1.5848	5.0319	0.0000	3,250.074 6	3,250.074 6	0.6593	0.0000	3,263.919 4
2017	14.5619	16.5380	12.9994	0.0198	0.1677	1.0245	1.1922	0.0445	0.9437	0.9882	0.0000	1,954.928 7	1,954.928 7	0.5437	0.0000	1,966.345 5
Total	24.7280	118.2272	79.0354	0.1114	13.7521	6.1675	19.9197	7.0052	5.6753	12.6805	0.0000	11,105.09 14	11,105.09 14	2.6190	0.0000	11,160.09 02

Mitigated Construction

	ROG	NOx	CO	SO2	Fugitive PM10	Exhaust PM10	PM10 Total	Fugitive PM2.5	Exhaust PM2.5	PM2.5 Total	Bio- CO2	NBio- CO2	Total CO2	CH4	N2O	CO2e
Year	lb/day										lb/day					
2015	6.1374	68.0070	43.0969	0.0569	3.4979	3.4204	6.9183	1.6708	3.1467	4.8175	0.0000	5,900.088 1	5,900.088 1	1.4161	0.0000	5,929.825 3
2016	4.0287	33.6822	22.9392	0.0347	3.2305	1.7226	4.9532	1.6231	1.5848	3.2079	0.0000	3,250.074 6	3,250.074 6	0.6593	0.0000	3,263.919 4
2017	14.5619	16.5380	12.9994	0.0198	0.1677	1.0245	1.1922	0.0445	0.9437	0.9882	0.0000	1,954.928 7	1,954.928 7	0.5437	0.0000	1,966.345 5
Total	24.7280	118.2272	79.0354	0.1114	6.8960	6.1675	13.0636	3.3384	5.6753	9.0137	0.0000	11,105.09 14	11,105.09 14	2.6190	0.0000	11,160.09 02

	ROG	NOx	CO	SO2	Fugitive PM10	Exhaust PM10	PM10 Total	Fugitive PM2.5	Exhaust PM2.5	PM2.5 Total	Bio- CO2	NBio-CO2	Total CO2	CH4	N2O	CO2e
Percent Reduction	0.00	0.00	0.00	0.00	49.85	0.00	34.42	52.34	0.00	28.92	0.00	0.00	0.00	0.00	0.00	0.00

2.2 Overall Operational**Unmitigated Operational**

	ROG	NOx	CO	SO2	Fugitive PM10	Exhaust PM10	PM10 Total	Fugitive PM2.5	Exhaust PM2.5	PM2.5 Total	Bio- CO2	NBio- CO2	Total CO2	CH4	N2O	CO2e
Category	lb/day										lb/day					
Area	2.1750	2.1000e-004	0.0223	0.0000		8.0000e-005	8.0000e-005		8.0000e-005	8.0000e-005		0.0469	0.0469	1.3000e-004		0.0496
Energy	0.0108	0.0984	0.0826	5.9000e-004		7.4700e-003	7.4700e-003		7.4700e-003	7.4700e-003		118.0164	118.0164	2.2600e-003	2.1600e-003	118.7347
Mobile	2.4251	6.7494	27.5322	0.0688	4.4988	0.0992	4.5980	1.2030	0.0913	1.2943		5,876.7823	5,876.7823	0.2336		5,881.6879
Total	4.6110	6.8480	27.6371	0.0694	4.4988	0.1068	4.6056	1.2030	0.0989	1.3019		5,994.8457	5,994.8457	0.2360	2.1600e-003	6,000.4722

Mitigated Operational

	ROG	NOx	CO	SO2	Fugitive PM10	Exhaust PM10	PM10 Total	Fugitive PM2.5	Exhaust PM2.5	PM2.5 Total	Bio- CO2	NBio- CO2	Total CO2	CH4	N2O	CO2e
Category	lb/day										lb/day					
Area	2.1750	2.1000e-004	0.0223	0.0000		8.0000e-005	8.0000e-005		8.0000e-005	8.0000e-005		0.0469	0.0469	1.3000e-004		0.0496
Energy	9.2800e-003	0.0844	0.0709	5.1000e-004		6.4100e-003	6.4100e-003		6.4100e-003	6.4100e-003		101.2281	101.2281	1.9400e-003	1.8600e-003	101.8442
Mobile	2.4251	6.7494	27.5322	0.0688	4.4988	0.0992	4.5980	1.2030	0.0913	1.2943		5,876.7823	5,876.7823	0.2336		5,881.6879
Total	4.6094	6.8340	27.6253	0.0693	4.4988	0.1057	4.6045	1.2030	0.0978	1.3008		5,978.0573	5,978.0573	0.2357	1.8600e-003	5,983.5817

	ROG	NOx	CO	SO2	Fugitive PM10	Exhaust PM10	PM10 Total	Fugitive PM2.5	Exhaust PM2.5	PM2.5 Total	Bio- CO2	NBio-CO2	Total CO2	CH4	N2O	CO2e
Percent Reduction	0.03	0.20	0.04	0.12	0.00	0.99	0.02	0.00	1.07	0.08	0.00	0.28	0.28	0.14	13.89	0.28

3.0 Construction Detail

Construction Phase

Phase Number	Phase Name	Phase Type	Start Date	End Date	Num Days Week	Num Days	Phase Description
1	Demolition	Demolition	11/1/2015	11/28/2015	5	20	
2	Site Preparation	Site Preparation	11/29/2015	12/6/2015	5	5	
3	Grading	Grading	12/6/2015	1/29/2016	5	40	
4	Building Construction	Building Construction	1/30/2016	12/15/2016	5	229	
5	Paving	Paving	12/16/2016	1/5/2017	5	15	
6	Architectural Coating	Architectural Coating	1/6/2017	3/9/2017	5	45	

Acres of Grading (Site Preparation Phase): 1.5

Acres of Grading (Grading Phase): 1.5

Acres of Paving: 0

Residential Indoor: 0; Residential Outdoor: 0; Non-Residential Indoor: 41,352; Non-Residential Outdoor: 13,784 (Architectural Coating – sqft)

OffRoad Equipment

Phase Name	Offroad Equipment Type	Amount	Usage Hours	Horse Power	Load Factor
Architectural Coating	Air Compressors	1	6.00	78	0.48
Paving	Cement and Mortar Mixers	1	8.00	9	0.56
Demolition	Concrete/Industrial Saws	1	8.00	81	0.73
Building Construction	Generator Sets	1	8.00	84	0.74
Building Construction	Cranes	1	8.00	226	0.29
Building Construction	Forklifts	2	7.00	89	0.20
Site Preparation	Graders	1	8.00	174	0.41
Paving	Pavers	1	8.00	125	0.42
Paving	Rollers	2	8.00	80	0.38
Demolition	Rubber Tired Dozers	1	8.00	255	0.40
Grading	Rubber Tired Dozers	1	8.00	255	0.40
Building Construction	Tractors/Loaders/Backhoes	1	6.00	97	0.37
Demolition	Tractors/Loaders/Backhoes	3	8.00	97	0.37
Grading	Tractors/Loaders/Backhoes	2	7.00	97	0.37
Paving	Tractors/Loaders/Backhoes	1	8.00	97	0.37
Site Preparation	Tractors/Loaders/Backhoes	1	7.00	97	0.37
Grading	Graders	1	8.00	174	0.41
Paving	Paving Equipment	1	8.00	130	0.36
Site Preparation	Scrapers	1	8.00	361	0.48
Building Construction	Welders	3	8.00	46	0.45

Trips and VMT

Phase Name	Offroad Equipment Count	Worker Trip Number	Vendor Trip Number	Hauling Trip Number	Worker Trip Length	Vendor Trip Length	Hauling Trip Length	Worker Vehicle Class	Vendor Vehicle Class	Hauling Vehicle Class
Demolition	5	13.00	0.00	109.00	14.70	6.90	20.00	LD_Mix	HDT_Mix	HHDT
Site Preparation	3	8.00	0.00	0.00	14.70	6.90	20.00	LD_Mix	HDT_Mix	HHDT
Grading	4	10.00	0.00	525.00	14.70	6.90	20.00	LD_Mix	HDT_Mix	HHDT
Building Construction	8	42.00	17.00	0.00	14.70	6.90	20.00	LD_Mix	HDT_Mix	HHDT
Paving	6	15.00	0.00	0.00	14.70	6.90	20.00	LD_Mix	HDT_Mix	HHDT
Architectural Coating	1	8.00	0.00	0.00	14.70	6.90	20.00	LD_Mix	HDT_Mix	HHDT

3.1 Mitigation Measures Construction

Water Exposed Area

Clean Paved Roads

3.2 Demolition - 2015

Unmitigated Construction On-Site

	ROG	NOx	CO	SO2	Fugitive PM10	Exhaust PM10	PM10 Total	Fugitive PM2.5	Exhaust PM2.5	PM2.5 Total	Bio- CO2	NBio- CO2	Total CO2	CH4	N2O	CO2e
Category	lb/day										lb/day					
Fugitive Dust					1.1754	0.0000	1.1754	0.1780	0.0000	0.1780			0.0000			0.0000
Off-Road	3.0666	29.6778	22.0566	0.0245		1.8651	1.8651		1.7469	1.7469		2,509.0599	2,509.0599	0.6357		2,522.4104
Total	3.0666	29.6778	22.0566	0.0245	1.1754	1.8651	3.0405	0.1780	1.7469	1.9249		2,509.0599	2,509.0599	0.6357		2,522.4104

3.2 Demolition - 2015

Unmitigated Construction Off-Site

	ROG	NOx	CO	SO2	Fugitive PM10	Exhaust PM10	PM10 Total	Fugitive PM2.5	Exhaust PM2.5	PM2.5 Total	Bio- CO2	NBio- CO2	Total CO2	CH4	N2O	CO2e
Category	lb/day										lb/day					
Hauling	0.1091	1.7293	1.1789	4.0700e-003	0.0949	0.0285	0.1234	0.0260	0.0262	0.0522		414.7950	414.7950	3.3700e-003		414.8658
Vendor	0.0000	0.0000	0.0000	0.0000	0.0000	0.0000	0.0000	0.0000	0.0000	0.0000		0.0000	0.0000	0.0000		0.0000
Worker	0.0641	0.0806	0.9940	1.8900e-003	0.1453	1.4500e-003	0.1468	0.0385	1.3300e-003	0.0399		165.2848	165.2848	9.4300e-003		165.4829
Total	0.1732	1.8098	2.1729	5.9600e-003	0.2402	0.0300	0.2702	0.0645	0.0276	0.0921		580.0798	580.0798	0.0128		580.3487

Mitigated Construction On-Site

	ROG	NOx	CO	SO2	Fugitive PM10	Exhaust PM10	PM10 Total	Fugitive PM2.5	Exhaust PM2.5	PM2.5 Total	Bio- CO2	NBio- CO2	Total CO2	CH4	N2O	CO2e
Category	lb/day										lb/day					
Fugitive Dust					0.5289	0.0000	0.5289	0.0801	0.0000	0.0801			0.0000			0.0000
Off-Road	3.0666	29.6778	22.0566	0.0245		1.8651	1.8651		1.7469	1.7469	0.0000	2,509.0599	2,509.0599	0.6357		2,522.4104
Total	3.0666	29.6778	22.0566	0.0245	0.5289	1.8651	2.3940	0.0801	1.7469	1.8270	0.0000	2,509.0599	2,509.0599	0.6357		2,522.4104

3.2 Demolition - 2015

Mitigated Construction Off-Site

	ROG	NOx	CO	SO2	Fugitive PM10	Exhaust PM10	PM10 Total	Fugitive PM2.5	Exhaust PM2.5	PM2.5 Total	Bio- CO2	NBio- CO2	Total CO2	CH4	N2O	CO2e
Category	lb/day										lb/day					
Hauling	0.1091	1.7293	1.1789	4.0700e-003	0.0949	0.0285	0.1234	0.0260	0.0262	0.0522		414.7950	414.7950	3.3700e-003		414.8658
Vendor	0.0000	0.0000	0.0000	0.0000	0.0000	0.0000	0.0000	0.0000	0.0000	0.0000		0.0000	0.0000	0.0000		0.0000
Worker	0.0641	0.0806	0.9940	1.8900e-003	0.1453	1.4500e-003	0.1468	0.0385	1.3300e-003	0.0399		165.2848	165.2848	9.4300e-003		165.4829
Total	0.1732	1.8098	2.1729	5.9600e-003	0.2402	0.0300	0.2702	0.0645	0.0276	0.0921		580.0798	580.0798	0.0128		580.3487

3.3 Site Preparation - 2015

Unmitigated Construction On-Site

	ROG	NOx	CO	SO2	Fugitive PM10	Exhaust PM10	PM10 Total	Fugitive PM2.5	Exhaust PM2.5	PM2.5 Total	Bio- CO2	NBio- CO2	Total CO2	CH4	N2O	CO2e
Category	lb/day										lb/day					
Fugitive Dust					0.3182	0.0000	0.3182	0.0344	0.0000	0.0344			0.0000			0.0000
Off-Road	2.8203	32.4699	18.6797	0.0239		1.5973	1.5973		1.4695	1.4695		2,508.1983	2,508.1983	0.7488		2,523.9231
Total	2.8203	32.4699	18.6797	0.0239	0.3182	1.5973	1.9155	0.0344	1.4695	1.5039		2,508.1983	2,508.1983	0.7488		2,523.9231

3.3 Site Preparation - 2015

Unmitigated Construction Off-Site

	ROG	NOx	CO	SO2	Fugitive PM10	Exhaust PM10	PM10 Total	Fugitive PM2.5	Exhaust PM2.5	PM2.5 Total	Bio- CO2	NBio- CO2	Total CO2	CH4	N2O	CO2e	
Category	lb/day										lb/day						
Hauling	0.0000	0.0000	0.0000	0.0000	0.0000	0.0000	0.0000	0.0000	0.0000	0.0000		0.0000	0.0000	0.0000			0.0000
Vendor	0.0000	0.0000	0.0000	0.0000	0.0000	0.0000	0.0000	0.0000	0.0000	0.0000		0.0000	0.0000	0.0000			0.0000
Worker	0.0395	0.0496	0.6117	1.1600e-003	0.0894	8.9000e-004	0.0903	0.0237	8.2000e-004	0.0245		101.7137	101.7137	5.8000e-003			101.8356
Total	0.0395	0.0496	0.6117	1.1600e-003	0.0894	8.9000e-004	0.0903	0.0237	8.2000e-004	0.0245		101.7137	101.7137	5.8000e-003			101.8356

Mitigated Construction On-Site

	ROG	NOx	CO	SO2	Fugitive PM10	Exhaust PM10	PM10 Total	Fugitive PM2.5	Exhaust PM2.5	PM2.5 Total	Bio- CO2	NBio- CO2	Total CO2	CH4	N2O	CO2e	
Category	lb/day										lb/day						
Fugitive Dust					0.1432	0.0000	0.1432	0.0155	0.0000	0.0155			0.0000			0.0000	
Off-Road	2.8203	32.4699	18.6797	0.0239		1.5973	1.5973		1.4695	1.4695	0.0000	2,508.1983	2,508.1983	0.7488			2,523.9231
Total	2.8203	32.4699	18.6797	0.0239	0.1432	1.5973	1.7405	0.0155	1.4695	1.4850	0.0000	2,508.1983	2,508.1983	0.7488			2,523.9231

3.3 Site Preparation - 2015

Mitigated Construction Off-Site

	ROG	NOx	CO	SO2	Fugitive PM10	Exhaust PM10	PM10 Total	Fugitive PM2.5	Exhaust PM2.5	PM2.5 Total	Bio- CO2	NBio- CO2	Total CO2	CH4	N2O	CO2e
Category	lb/day										lb/day					
Hauling	0.0000	0.0000	0.0000	0.0000	0.0000	0.0000	0.0000	0.0000	0.0000	0.0000		0.0000	0.0000	0.0000		0.0000
Vendor	0.0000	0.0000	0.0000	0.0000	0.0000	0.0000	0.0000	0.0000	0.0000	0.0000		0.0000	0.0000	0.0000		0.0000
Worker	0.0395	0.0496	0.6117	1.1600e-003	0.0894	8.9000e-004	0.0903	0.0237	8.2000e-004	0.0245		101.7137	101.7137	5.8000e-003		101.8356
Total	0.0395	0.0496	0.6117	1.1600e-003	0.0894	8.9000e-004	0.0903	0.0237	8.2000e-004	0.0245		101.7137	101.7137	5.8000e-003		101.8356

3.4 Grading - 2015

Unmitigated Construction On-Site

	ROG	NOx	CO	SO2	Fugitive PM10	Exhaust PM10	PM10 Total	Fugitive PM2.5	Exhaust PM2.5	PM2.5 Total	Bio- CO2	NBio- CO2	Total CO2	CH4	N2O	CO2e
Category	lb/day										lb/day					
Fugitive Dust					6.0737	0.0000	6.0737	3.3163	0.0000	3.3163			0.0000			0.0000
Off-Road	2.9656	31.2611	20.2019	0.0206		1.7524	1.7524		1.6122	1.6122		2,164.1012	2,164.1012	0.6461		2,177.6687
Total	2.9656	31.2611	20.2019	0.0206	6.0737	1.7524	7.8262	3.3163	1.6122	4.9286		2,164.1012	2,164.1012	0.6461		2,177.6687

3.4 Grading - 2015

Unmitigated Construction Off-Site

	ROG	NOx	CO	SO2	Fugitive PM10	Exhaust PM10	PM10 Total	Fugitive PM2.5	Exhaust PM2.5	PM2.5 Total	Bio- CO2	NBio- CO2	Total CO2	CH4	N2O	CO2e
Category	lb/day										lb/day					
Hauling	0.2627	4.1645	2.8390	9.8100e-003	0.4203	0.0687	0.4890	0.1096	0.0632	0.1728		998.9328	998.9328	8.1200e-003		999.1034
Vendor	0.0000	0.0000	0.0000	0.0000	0.0000	0.0000	0.0000	0.0000	0.0000	0.0000		0.0000	0.0000	0.0000		0.0000
Worker	0.0493	0.0620	0.7646	1.4500e-003	0.1118	1.1200e-003	0.1129	0.0296	1.0200e-003	0.0307		127.1422	127.1422	7.2600e-003		127.2945
Total	0.3120	4.2265	3.6036	0.0113	0.5321	0.0698	0.6019	0.1393	0.0642	0.2035		1,126.0750	1,126.0750	0.0154		1,126.3979

Mitigated Construction On-Site

	ROG	NOx	CO	SO2	Fugitive PM10	Exhaust PM10	PM10 Total	Fugitive PM2.5	Exhaust PM2.5	PM2.5 Total	Bio- CO2	NBio- CO2	Total CO2	CH4	N2O	CO2e
Category	lb/day										lb/day					
Fugitive Dust					2.7332	0.0000	2.7332	1.4923	0.0000	1.4923			0.0000			0.0000
Off-Road	2.9656	31.2611	20.2019	0.0206		1.7524	1.7524		1.6122	1.6122	0.0000	2,164.1012	2,164.1012	0.6461		2,177.6687
Total	2.9656	31.2611	20.2019	0.0206	2.7332	1.7524	4.4856	1.4923	1.6122	3.1046	0.0000	2,164.1012	2,164.1012	0.6461		2,177.6687

3.4 Grading - 2015

Mitigated Construction Off-Site

	ROG	NOx	CO	SO2	Fugitive PM10	Exhaust PM10	PM10 Total	Fugitive PM2.5	Exhaust PM2.5	PM2.5 Total	Bio- CO2	NBio- CO2	Total CO2	CH4	N2O	CO2e
Category	lb/day										lb/day					
Hauling	0.2627	4.1645	2.8390	9.8100e-003	0.4203	0.0687	0.4890	0.1096	0.0632	0.1728		998.9328	998.9328	8.1200e-003		999.1034
Vendor	0.0000	0.0000	0.0000	0.0000	0.0000	0.0000	0.0000	0.0000	0.0000	0.0000		0.0000	0.0000	0.0000		0.0000
Worker	0.0493	0.0620	0.7646	1.4500e-003	0.1118	1.1200e-003	0.1129	0.0296	1.0200e-003	0.0307		127.1422	127.1422	7.2600e-003		127.2945
Total	0.3120	4.2265	3.6036	0.0113	0.5321	0.0698	0.6019	0.1393	0.0642	0.2035		1,126.0750	1,126.0750	0.0154		1,126.3979

3.4 Grading - 2016

Unmitigated Construction On-Site

	ROG	NOx	CO	SO2	Fugitive PM10	Exhaust PM10	PM10 Total	Fugitive PM2.5	Exhaust PM2.5	PM2.5 Total	Bio- CO2	NBio- CO2	Total CO2	CH4	N2O	CO2e
Category	lb/day										lb/day					
Fugitive Dust					6.0737	0.0000	6.0737	3.3163	0.0000	3.3163			0.0000			0.0000
Off-Road	2.8530	29.9470	19.6345	0.0206		1.6671	1.6671		1.5337	1.5337		2,139.2742	2,139.2742	0.6453		2,152.8251
Total	2.8530	29.9470	19.6345	0.0206	6.0737	1.6671	7.7408	3.3163	1.5337	4.8501		2,139.2742	2,139.2742	0.6453		2,152.8251

3.4 Grading - 2016

Unmitigated Construction Off-Site

	ROG	NOx	CO	SO2	Fugitive PM10	Exhaust PM10	PM10 Total	Fugitive PM2.5	Exhaust PM2.5	PM2.5 Total	Bio- CO2	NBio- CO2	Total CO2	CH4	N2O	CO2e
Category	lb/day										lb/day					
Hauling	0.2312	3.6792	2.6109	9.8000e-003	0.3856	0.0545	0.4400	0.1011	0.0501	0.1512		987.8983	987.8983	7.3000e-003		988.0517
Vendor	0.0000	0.0000	0.0000	0.0000	0.0000	0.0000	0.0000	0.0000	0.0000	0.0000		0.0000	0.0000	0.0000		0.0000
Worker	0.0445	0.0561	0.6937	1.4500e-003	0.1118	1.0600e-003	0.1128	0.0296	9.7000e-004	0.0306		122.9021	122.9021	6.6900e-003		123.0426
Total	0.2757	3.7353	3.3046	0.0113	0.4973	0.0555	0.5529	0.1308	0.0511	0.1819		1,110.8004	1,110.8004	0.0140		1,111.0943

Mitigated Construction On-Site

	ROG	NOx	CO	SO2	Fugitive PM10	Exhaust PM10	PM10 Total	Fugitive PM2.5	Exhaust PM2.5	PM2.5 Total	Bio- CO2	NBio- CO2	Total CO2	CH4	N2O	CO2e
Category	lb/day										lb/day					
Fugitive Dust					2.7332	0.0000	2.7332	1.4923	0.0000	1.4923			0.0000			0.0000
Off-Road	2.8530	29.9470	19.6345	0.0206		1.6671	1.6671		1.5337	1.5337	0.0000	2,139.2742	2,139.2742	0.6453		2,152.8251
Total	2.8530	29.9470	19.6345	0.0206	2.7332	1.6671	4.4003	1.4923	1.5337	3.0261	0.0000	2,139.2742	2,139.2742	0.6453		2,152.8251

3.4 Grading - 2016

Mitigated Construction Off-Site

	ROG	NOx	CO	SO2	Fugitive PM10	Exhaust PM10	PM10 Total	Fugitive PM2.5	Exhaust PM2.5	PM2.5 Total	Bio- CO2	NBio- CO2	Total CO2	CH4	N2O	CO2e
Category	lb/day										lb/day					
Hauling	0.2312	3.6792	2.6109	9.8000e-003	0.3856	0.0545	0.4400	0.1011	0.0501	0.1512		987.8983	987.8983	7.3000e-003		988.0517
Vendor	0.0000	0.0000	0.0000	0.0000	0.0000	0.0000	0.0000	0.0000	0.0000	0.0000		0.0000	0.0000	0.0000		0.0000
Worker	0.0445	0.0561	0.6937	1.4500e-003	0.1118	1.0600e-003	0.1128	0.0296	9.7000e-004	0.0306		122.9021	122.9021	6.6900e-003		123.0426
Total	0.2757	3.7353	3.3046	0.0113	0.4973	0.0555	0.5529	0.1308	0.0511	0.1819		1,110.8004	1,110.8004	0.0140		1,111.0943

3.5 Building Construction - 2016

Unmitigated Construction On-Site

	ROG	NOx	CO	SO2	Fugitive PM10	Exhaust PM10	PM10 Total	Fugitive PM2.5	Exhaust PM2.5	PM2.5 Total	Bio- CO2	NBio- CO2	Total CO2	CH4	N2O	CO2e
Category	lb/day										lb/day					
Off-Road	3.6984	24.6320	16.7166	0.0249		1.6257	1.6257		1.5569	1.5569		2,352.2239	2,352.2239	0.5420		2,363.6057
Total	3.6984	24.6320	16.7166	0.0249		1.6257	1.6257		1.5569	1.5569		2,352.2239	2,352.2239	0.5420		2,363.6057

3.5 Building Construction - 2016

Unmitigated Construction Off-Site

	ROG	NOx	CO	SO2	Fugitive PM10	Exhaust PM10	PM10 Total	Fugitive PM2.5	Exhaust PM2.5	PM2.5 Total	Bio- CO2	NBio- CO2	Total CO2	CH4	N2O	CO2e	
Category	lb/day										lb/day						
Hauling	0.0000	0.0000	0.0000	0.0000	0.0000	0.0000	0.0000	0.0000	0.0000	0.0000		0.0000	0.0000	0.0000			0.0000
Vendor	0.1432	1.4877	1.7284	3.7400e-003	0.1060	0.0233	0.1293	0.0302	0.0214	0.0516		374.3750	374.3750	2.7500e-003			374.4328
Worker	0.1871	0.2354	2.9135	6.1100e-003	0.4695	4.4400e-003	0.4739	0.1245	4.0800e-003	0.1286		516.1889	516.1889	0.0281			516.7790
Total	0.3303	1.7231	4.6419	9.8500e-003	0.5755	0.0277	0.6032	0.1547	0.0255	0.1801		890.5640	890.5640	0.0309			891.2118

Mitigated Construction On-Site

	ROG	NOx	CO	SO2	Fugitive PM10	Exhaust PM10	PM10 Total	Fugitive PM2.5	Exhaust PM2.5	PM2.5 Total	Bio- CO2	NBio- CO2	Total CO2	CH4	N2O	CO2e	
Category	lb/day										lb/day						
Off-Road	3.6984	24.6320	16.7166	0.0249		1.6257	1.6257		1.5569	1.5569	0.0000	2,352.2239	2,352.2239	0.5420			2,363.6057
Total	3.6984	24.6320	16.7166	0.0249		1.6257	1.6257		1.5569	1.5569	0.0000	2,352.2239	2,352.2239	0.5420			2,363.6057

3.5 Building Construction - 2016

Mitigated Construction Off-Site

	ROG	NOx	CO	SO2	Fugitive PM10	Exhaust PM10	PM10 Total	Fugitive PM2.5	Exhaust PM2.5	PM2.5 Total	Bio- CO2	NBio- CO2	Total CO2	CH4	N2O	CO2e	
Category	lb/day										lb/day						
Hauling	0.0000	0.0000	0.0000	0.0000	0.0000	0.0000	0.0000	0.0000	0.0000	0.0000		0.0000	0.0000	0.0000			0.0000
Vendor	0.1432	1.4877	1.7284	3.7400e-003	0.1060	0.0233	0.1293	0.0302	0.0214	0.0516		374.3750	374.3750	2.7500e-003			374.4328
Worker	0.1871	0.2354	2.9135	6.1100e-003	0.4695	4.4400e-003	0.4739	0.1245	4.0800e-003	0.1286		516.1889	516.1889	0.0281			516.7790
Total	0.3303	1.7231	4.6419	9.8500e-003	0.5755	0.0277	0.6032	0.1547	0.0255	0.1801		890.5640	890.5640	0.0309			891.2118

3.6 Paving - 2016

Unmitigated Construction On-Site

	ROG	NOx	CO	SO2	Fugitive PM10	Exhaust PM10	PM10 Total	Fugitive PM2.5	Exhaust PM2.5	PM2.5 Total	Bio- CO2	NBio- CO2	Total CO2	CH4	N2O	CO2e	
Category	lb/day										lb/day						
Off-Road	1.7811	17.9300	12.1433	0.0176		1.1252	1.1252		1.0363	1.0363		1,804.8600	1,804.8600	0.5344			1,816.0828
Paving	0.2620					0.0000	0.0000		0.0000	0.0000			0.0000				0.0000
Total	2.0431	17.9300	12.1433	0.0176		1.1252	1.1252		1.0363	1.0363		1,804.8600	1,804.8600	0.5344			1,816.0828

3.6 Paving - 2016

Unmitigated Construction Off-Site

	ROG	NOx	CO	SO2	Fugitive PM10	Exhaust PM10	PM10 Total	Fugitive PM2.5	Exhaust PM2.5	PM2.5 Total	Bio- CO2	NBio- CO2	Total CO2	CH4	N2O	CO2e	
Category	lb/day										lb/day						
Hauling	0.0000	0.0000	0.0000	0.0000	0.0000	0.0000	0.0000	0.0000	0.0000	0.0000		0.0000	0.0000	0.0000			0.0000
Vendor	0.0000	0.0000	0.0000	0.0000	0.0000	0.0000	0.0000	0.0000	0.0000	0.0000		0.0000	0.0000	0.0000			0.0000
Worker	0.0668	0.0841	1.0406	2.1800e-003	0.1677	1.5900e-003	0.1693	0.0445	1.4600e-003	0.0459		184.3532	184.3532	0.0100			184.5639
Total	0.0668	0.0841	1.0406	2.1800e-003	0.1677	1.5900e-003	0.1693	0.0445	1.4600e-003	0.0459		184.3532	184.3532	0.0100			184.5639

Mitigated Construction On-Site

	ROG	NOx	CO	SO2	Fugitive PM10	Exhaust PM10	PM10 Total	Fugitive PM2.5	Exhaust PM2.5	PM2.5 Total	Bio- CO2	NBio- CO2	Total CO2	CH4	N2O	CO2e	
Category	lb/day										lb/day						
Off-Road	1.7811	17.9300	12.1433	0.0176		1.1252	1.1252		1.0363	1.0363	0.0000	1,804.8600	1,804.8600	0.5344			1,816.0828
Paving	0.2620					0.0000	0.0000		0.0000	0.0000			0.0000				0.0000
Total	2.0431	17.9300	12.1433	0.0176		1.1252	1.1252		1.0363	1.0363	0.0000	1,804.8600	1,804.8600	0.5344			1,816.0828

3.6 Paving - 2016

Mitigated Construction Off-Site

	ROG	NOx	CO	SO2	Fugitive PM10	Exhaust PM10	PM10 Total	Fugitive PM2.5	Exhaust PM2.5	PM2.5 Total	Bio- CO2	NBio- CO2	Total CO2	CH4	N2O	CO2e	
Category	lb/day										lb/day						
Hauling	0.0000	0.0000	0.0000	0.0000	0.0000	0.0000	0.0000	0.0000	0.0000	0.0000		0.0000	0.0000	0.0000			0.0000
Vendor	0.0000	0.0000	0.0000	0.0000	0.0000	0.0000	0.0000	0.0000	0.0000	0.0000		0.0000	0.0000	0.0000			0.0000
Worker	0.0668	0.0841	1.0406	2.1800e-003	0.1677	1.5900e-003	0.1693	0.0445	1.4600e-003	0.0459		184.3532	184.3532	0.0100			184.5639
Total	0.0668	0.0841	1.0406	2.1800e-003	0.1677	1.5900e-003	0.1693	0.0445	1.4600e-003	0.0459		184.3532	184.3532	0.0100			184.5639

3.6 Paving - 2017

Unmitigated Construction On-Site

	ROG	NOx	CO	SO2	Fugitive PM10	Exhaust PM10	PM10 Total	Fugitive PM2.5	Exhaust PM2.5	PM2.5 Total	Bio- CO2	NBio- CO2	Total CO2	CH4	N2O	CO2e	
Category	lb/day										lb/day						
Off-Road	1.6402	16.4619	12.0566	0.0176		1.0230	1.0230		0.9423	0.9423		1,777.4745	1,777.4745	0.5344			1,788.6966
Paving	0.2620					0.0000	0.0000		0.0000	0.0000			0.0000				0.0000
Total	1.9022	16.4619	12.0566	0.0176		1.0230	1.0230		0.9423	0.9423		1,777.4745	1,777.4745	0.5344			1,788.6966

3.6 Paving - 2017

Unmitigated Construction Off-Site

	ROG	NOx	CO	SO2	Fugitive PM10	Exhaust PM10	PM10 Total	Fugitive PM2.5	Exhaust PM2.5	PM2.5 Total	Bio- CO2	NBio- CO2	Total CO2	CH4	N2O	CO2e	
Category	lb/day										lb/day						
Hauling	0.0000	0.0000	0.0000	0.0000	0.0000	0.0000	0.0000	0.0000	0.0000	0.0000		0.0000	0.0000	0.0000			0.0000
Vendor	0.0000	0.0000	0.0000	0.0000	0.0000	0.0000	0.0000	0.0000	0.0000	0.0000		0.0000	0.0000	0.0000			0.0000
Worker	0.0600	0.0761	0.9428	2.1800e-003	0.1677	1.5200e-003	0.1692	0.0445	1.4000e-003	0.0459		177.4541	177.4541	9.2800e-003			177.6489
Total	0.0600	0.0761	0.9428	2.1800e-003	0.1677	1.5200e-003	0.1692	0.0445	1.4000e-003	0.0459		177.4541	177.4541	9.2800e-003			177.6489

Mitigated Construction On-Site

	ROG	NOx	CO	SO2	Fugitive PM10	Exhaust PM10	PM10 Total	Fugitive PM2.5	Exhaust PM2.5	PM2.5 Total	Bio- CO2	NBio- CO2	Total CO2	CH4	N2O	CO2e	
Category	lb/day										lb/day						
Off-Road	1.6402	16.4619	12.0566	0.0176		1.0230	1.0230		0.9423	0.9423	0.0000	1,777.4745	1,777.4745	0.5344			1,788.6966
Paving	0.2620					0.0000	0.0000		0.0000	0.0000			0.0000				0.0000
Total	1.9022	16.4619	12.0566	0.0176		1.0230	1.0230		0.9423	0.9423	0.0000	1,777.4745	1,777.4745	0.5344			1,788.6966

3.6 Paving - 2017

Mitigated Construction Off-Site

	ROG	NOx	CO	SO2	Fugitive PM10	Exhaust PM10	PM10 Total	Fugitive PM2.5	Exhaust PM2.5	PM2.5 Total	Bio- CO2	NBio- CO2	Total CO2	CH4	N2O	CO2e	
Category	lb/day										lb/day						
Hauling	0.0000	0.0000	0.0000	0.0000	0.0000	0.0000	0.0000	0.0000	0.0000	0.0000		0.0000	0.0000	0.0000			0.0000
Vendor	0.0000	0.0000	0.0000	0.0000	0.0000	0.0000	0.0000	0.0000	0.0000	0.0000		0.0000	0.0000	0.0000			0.0000
Worker	0.0600	0.0761	0.9428	2.1800e-003	0.1677	1.5200e-003	0.1692	0.0445	1.4000e-003	0.0459		177.4541	177.4541	9.2800e-003			177.6489
Total	0.0600	0.0761	0.9428	2.1800e-003	0.1677	1.5200e-003	0.1692	0.0445	1.4000e-003	0.0459		177.4541	177.4541	9.2800e-003			177.6489

3.7 Architectural Coating - 2017

Unmitigated Construction On-Site

	ROG	NOx	CO	SO2	Fugitive PM10	Exhaust PM10	PM10 Total	Fugitive PM2.5	Exhaust PM2.5	PM2.5 Total	Bio- CO2	NBio- CO2	Total CO2	CH4	N2O	CO2e	
Category	lb/day										lb/day						
Archit. Coating	14.1975					0.0000	0.0000		0.0000	0.0000			0.0000				0.0000
Off-Road	0.3323	2.1850	1.8681	2.9700e-003		0.1733	0.1733		0.1733	0.1733		281.4481	281.4481	0.0297			282.0721
Total	14.5298	2.1850	1.8681	2.9700e-003		0.1733	0.1733		0.1733	0.1733		281.4481	281.4481	0.0297			282.0721

3.7 Architectural Coating - 2017

Unmitigated Construction Off-Site

	ROG	NOx	CO	SO2	Fugitive PM10	Exhaust PM10	PM10 Total	Fugitive PM2.5	Exhaust PM2.5	PM2.5 Total	Bio- CO2	NBio- CO2	Total CO2	CH4	N2O	CO2e
Category	lb/day										lb/day					
Hauling	0.0000	0.0000	0.0000	0.0000	0.0000	0.0000	0.0000	0.0000	0.0000	0.0000		0.0000	0.0000	0.0000		0.0000
Vendor	0.0000	0.0000	0.0000	0.0000	0.0000	0.0000	0.0000	0.0000	0.0000	0.0000		0.0000	0.0000	0.0000		0.0000
Worker	0.0320	0.0406	0.5028	1.1600e-003	0.0894	8.1000e-004	0.0902	0.0237	7.5000e-004	0.0245		94.6422	94.6422	4.9500e-003		94.7461
Total	0.0320	0.0406	0.5028	1.1600e-003	0.0894	8.1000e-004	0.0902	0.0237	7.5000e-004	0.0245		94.6422	94.6422	4.9500e-003		94.7461

Mitigated Construction On-Site

	ROG	NOx	CO	SO2	Fugitive PM10	Exhaust PM10	PM10 Total	Fugitive PM2.5	Exhaust PM2.5	PM2.5 Total	Bio- CO2	NBio- CO2	Total CO2	CH4	N2O	CO2e
Category	lb/day										lb/day					
Archit. Coating	14.1975					0.0000	0.0000		0.0000	0.0000			0.0000			0.0000
Off-Road	0.3323	2.1850	1.8681	2.9700e-003		0.1733	0.1733		0.1733	0.1733	0.0000	281.4481	281.4481	0.0297		282.0721
Total	14.5298	2.1850	1.8681	2.9700e-003		0.1733	0.1733		0.1733	0.1733	0.0000	281.4481	281.4481	0.0297		282.0721

3.7 Architectural Coating - 2017

Mitigated Construction Off-Site

	ROG	NOx	CO	SO2	Fugitive PM10	Exhaust PM10	PM10 Total	Fugitive PM2.5	Exhaust PM2.5	PM2.5 Total	Bio- CO2	NBio- CO2	Total CO2	CH4	N2O	CO2e	
Category	lb/day										lb/day						
Hauling	0.0000	0.0000	0.0000	0.0000	0.0000	0.0000	0.0000	0.0000	0.0000	0.0000		0.0000	0.0000	0.0000			0.0000
Vendor	0.0000	0.0000	0.0000	0.0000	0.0000	0.0000	0.0000	0.0000	0.0000	0.0000		0.0000	0.0000	0.0000			0.0000
Worker	0.0320	0.0406	0.5028	1.1600e-003	0.0894	8.1000e-004	0.0902	0.0237	7.5000e-004	0.0245		94.6422	94.6422	4.9500e-003			94.7461
Total	0.0320	0.0406	0.5028	1.1600e-003	0.0894	8.1000e-004	0.0902	0.0237	7.5000e-004	0.0245		94.6422	94.6422	4.9500e-003			94.7461

4.0 Operational Detail - Mobile

4.1 Mitigation Measures Mobile

	ROG	NOx	CO	SO2	Fugitive PM10	Exhaust PM10	PM10 Total	Fugitive PM2.5	Exhaust PM2.5	PM2.5 Total	Bio- CO2	NBio- CO2	Total CO2	CH4	N2O	CO2e	
Category	lb/day										lb/day						
Mitigated	2.4251	6.7494	27.5322	0.0688	4.4988	0.0992	4.5980	1.2030	0.0913	1.2943		5,876.7823	5,876.7823	0.2336			5,881.6879
Unmitigated	2.4251	6.7494	27.5322	0.0688	4.4988	0.0992	4.5980	1.2030	0.0913	1.2943		5,876.7823	5,876.7823	0.2336			5,881.6879

4.2 Trip Summary Information

Land Use	Average Daily Trip Rate			Unmitigated	Mitigated
	Weekday	Saturday	Sunday	Annual VMT	Annual VMT
Government (Civic Center)	156.35	0.00	0.00	344,882	344,882
Junior College (2Yr)	541.55	221.23	23.84	1,274,088	1,274,088
Parking Lot	0.00	0.00	0.00		
Total	697.91	221.23	23.84	1,618,970	1,618,970

4.3 Trip Type Information

Land Use	Miles			Trip %			Trip Purpose %		
	H-W or C-W	H-S or C-C	H-O or C-NW	H-W or C-W	H-S or C-C	H-O or C-NW	Primary	Diverted	Pass-by
Government (Civic Center)	16.60	8.40	6.90	75.00	20.00	5.00	50	34	16
Junior College (2Yr)	16.60	8.40	6.90	6.40	88.60	5.00	92	7	1
Parking Lot	16.60	8.40	6.90	0.00	0.00	0.00	0	0	0

LDA	LDT1	LDT2	MDV	LHD1	LHD2	MHD	HHD	OBUS	UBUS	MCY	SBUS	MH
0.532559	0.058242	0.178229	0.125155	0.038934	0.006273	0.016761	0.032323	0.002478	0.003154	0.003685	0.000544	0.001663

5.0 Energy Detail

5.1 Fleet Mix

Historical Energy Use: N

5.1 Mitigation Measures Energy

Exceed Title 24

Install High Efficiency Lighting

	ROG	NOx	CO	SO2	Fugitive PM10	Exhaust PM10	PM10 Total	Fugitive PM2.5	Exhaust PM2.5	PM2.5 Total	Bio- CO2	NBio- CO2	Total CO2	CH4	N2O	CO2e
Category	lb/day										lb/day					
NaturalGas Mitigated	9.2800e-003	0.0844	0.0709	5.1000e-004		6.4100e-003	6.4100e-003		6.4100e-003	6.4100e-003		101.2281	101.2281	1.9400e-003	1.8600e-003	101.8442
NaturalGas Unmitigated	0.0108	0.0984	0.0826	5.9000e-004		7.4700e-003	7.4700e-003		7.4700e-003	7.4700e-003		118.0164	118.0164	2.2600e-003	2.1600e-003	118.7347

5.2 Energy by Land Use - NaturalGas

Unmitigated

	NaturalGas Use	ROG	NOx	CO	SO2	Fugitive PM10	Exhaust PM10	PM10 Total	Fugitive PM2.5	Exhaust PM2.5	PM2.5 Total	Bio- CO2	NBio- CO2	Total CO2	CH4	N2O	CO2e
Land Use	kBTU/yr	lb/day										lb/day					
Junior College (2Yr)	856.005	9.2300e-003	0.0839	0.0705	5.0000e-004		6.3800e-003	6.3800e-003		6.3800e-003	6.3800e-003		100.7065	100.7065	1.9300e-003	1.8500e-003	101.3194
Parking Lot	0	0.0000	0.0000	0.0000	0.0000		0.0000	0.0000		0.0000	0.0000		0.0000	0.0000	0.0000	0.0000	0.0000
Government (Civic Center)	147.134	1.5900e-003	0.0144	0.0121	9.0000e-005		1.1000e-003	1.1000e-003		1.1000e-003	1.1000e-003		17.3099	17.3099	3.3000e-004	3.2000e-004	17.4153
Total		0.0108	0.0983	0.0826	5.9000e-004		7.4800e-003	7.4800e-003		7.4800e-003	7.4800e-003		118.0164	118.0164	2.2600e-003	2.1700e-003	118.7347

5.2 Energy by Land Use - NaturalGas

Mitigated

	NaturalGas Use	ROG	NOx	CO	SO2	Fugitive PM10	Exhaust PM10	PM10 Total	Fugitive PM2.5	Exhaust PM2.5	PM2.5 Total	Bio- CO2	NBio- CO2	Total CO2	CH4	N2O	CO2e
Land Use	kBTU/yr	lb/day										lb/day					
Parking Lot	0	0.0000	0.0000	0.0000	0.0000		0.0000	0.0000		0.0000	0.0000		0.0000	0.0000	0.0000	0.0000	0.0000
Government (Civic Center)	0.119395	1.2900e-003	0.0117	9.8300e-003	7.0000e-005		8.9000e-004	8.9000e-004		8.9000e-004	8.9000e-004		14.0465	14.0465	2.7000e-004	2.6000e-004	14.1320
Junior College (2Yr)	0.741044	7.9900e-003	0.0727	0.0610	4.4000e-004		5.5200e-003	5.5200e-003		5.5200e-003	5.5200e-003		87.1816	87.1816	1.6700e-003	1.6000e-003	87.7122
Total		9.2800e-003	0.0844	0.0709	5.1000e-004		6.4100e-003	6.4100e-003		6.4100e-003	6.4100e-003		101.2281	101.2281	1.9400e-003	1.8600e-003	101.8442

6.0 Area Detail

6.1 Mitigation Measures Area

	ROG	NOx	CO	SO2	Fugitive PM10	Exhaust PM10	PM10 Total	Fugitive PM2.5	Exhaust PM2.5	PM2.5 Total	Bio- CO2	NBio- CO2	Total CO2	CH4	N2O	CO2e
Category	lb/day										lb/day					
Mitigated	2.1750	2.1000e-004	0.0223	0.0000		8.0000e-005	8.0000e-005		8.0000e-005	8.0000e-005		0.0469	0.0469	1.3000e-004		0.0496
Unmitigated	2.1750	2.1000e-004	0.0223	0.0000		8.0000e-005	8.0000e-005		8.0000e-005	8.0000e-005		0.0469	0.0469	1.3000e-004		0.0496

6.2 Area by SubCategory

Unmitigated

	ROG	NOx	CO	SO2	Fugitive PM10	Exhaust PM10	PM10 Total	Fugitive PM2.5	Exhaust PM2.5	PM2.5 Total	Bio- CO2	NBio- CO2	Total CO2	CH4	N2O	CO2e
SubCategory	lb/day										lb/day					
Architectural Coating	0.1750					0.0000	0.0000		0.0000	0.0000			0.0000			0.0000
Consumer Products	1.9978					0.0000	0.0000		0.0000	0.0000			0.0000			0.0000
Landscaping	2.1500e-003	2.1000e-004	0.0223	0.0000		8.0000e-005	8.0000e-005		8.0000e-005	8.0000e-005		0.0469	0.0469	1.3000e-004		0.0496
Total	2.1750	2.1000e-004	0.0223	0.0000		8.0000e-005	8.0000e-005		8.0000e-005	8.0000e-005		0.0469	0.0469	1.3000e-004		0.0496

Mitigated

	ROG	NOx	CO	SO2	Fugitive PM10	Exhaust PM10	PM10 Total	Fugitive PM2.5	Exhaust PM2.5	PM2.5 Total	Bio- CO2	NBio- CO2	Total CO2	CH4	N2O	CO2e
SubCategory	lb/day										lb/day					
Architectural Coating	0.1750					0.0000	0.0000		0.0000	0.0000			0.0000			0.0000
Consumer Products	1.9978					0.0000	0.0000		0.0000	0.0000			0.0000			0.0000
Landscaping	2.1500e-003	2.1000e-004	0.0223	0.0000		8.0000e-005	8.0000e-005		8.0000e-005	8.0000e-005		0.0469	0.0469	1.3000e-004		0.0496
Total	2.1750	2.1000e-004	0.0223	0.0000		8.0000e-005	8.0000e-005		8.0000e-005	8.0000e-005		0.0469	0.0469	1.3000e-004		0.0496

7.0 Water Detail

7.1 Mitigation Measures Water

Apply Water Conservation Strategy

Install Low Flow Bathroom Faucet

Install Low Flow Toilet

Use Water Efficient Landscaping

8.0 Waste Detail

8.1 Mitigation Measures Waste

Institute Recycling and Composting Services

9.0 Operational Offroad

Equipment Type	Number	Hours/Day	Days/Year	Horse Power	Load Factor	Fuel Type
----------------	--------	-----------	-----------	-------------	-------------	-----------

10.0 Vegetation

SIMPLIFIED CALINE4 CARBON MONOXIDE ANALYSIS

Project Title: SMC Malibu Campus

Background Information

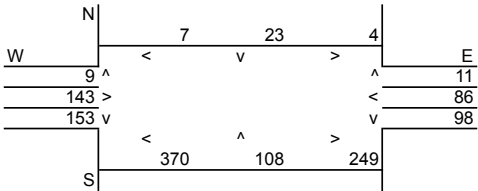
Nearest Air Monitoring Station measuring CO: West LA
 Background 1-hour CO Concentration (ppm): 4.4
 Background 8-hour CO Concentration (ppm): 2.8
 Persistence Factor: 0.7
 Analysis Year: 2017

Roadway Data

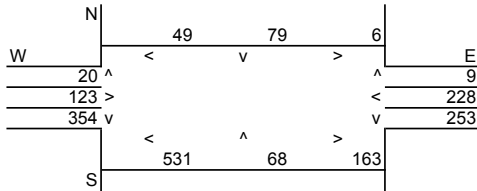
Intersection: No 5. Stuart Ranch Rd-Webb Way/Civic Center Way
 Analysis Condition: Future 2017 Cumulative with Project

	Roadway Type	No. of Lanes	Average Speed	
			A.M.	P.M.
North-South Roadway:	Stuart Ranch Rd-Webb Way	At Grade	4	15
East-West Roadway:	Civic Center Way	At Grade	2	15

A.M. Peak Hour Traffic Volumes



P.M. Peak Hour Traffic Volumes



Highest Traffic Volumes (Vehicles per Hour)

N-S Road:	1,001	N-S Road:	1,448
E-W Road:	768	E-W Road:	1,305

Roadway CO Contributions and Concentrations

Emissions = (A x B x C) / 100,000¹

Roadway	A ₁	Reference CO Concentrations			B Traffic Volume	C Emission Factors ²	Estimated CO Concentrations			
	E.O.R.	A ₂ 25 Feet	A ₃ 50 Feet	A ₄ 100 Feet			E.O.R.	25 Feet	50 Feet	100 Feet
A.M. Peak Traffic Hour										
North-South Road	11.9	7.0	5.4	3.8	1,001	2.78	0.33	0.19	0.15	0.11
East-West Road	3.7	2.7	2.2	1.7	768	2.78	0.08	0.06	0.05	0.04
P.M. Peak Traffic Hour										
North-South Road	11.9	7.0	5.4	3.8	1,448	2.78	0.48	0.28	0.22	0.15
East-West Road	3.7	2.7	2.2	1.7	1,305	2.78	0.13	0.10	0.08	0.06

¹ Methodology from Bay Area Air Quality Management District *BAAQMD CEQA Guidelines* (1996).

² Emission factors from EMFAC2007.

Total Roadway CO Concentrations

Peak Hour Emissions = North-South Concentration + East-West Concentration + Background 1-hour Concentration²

8-Hour Emissions = ((Highest Peak Hour Concentration - Background 1-hour Concentration) x Persistence Factor) + Background 8-hour Concentration²

	A.M. Peak Hour	P.M. Peak Hour	8-Hour
Roadway Edge	4.8	5.0	3.2
25 Feet from Roadway Edge	4.7	4.8	3.1
50 Feet from Roadway Edge	4.6	4.7	3.0
100 Feet from Roadway Edge	4.5	4.6	2.9

² Methodology from Bay Area Air Quality Management District *BAAQMD CEQA Guidelines* (1996).