

SMC ASSOCIATES
FALL 2022 LECTURE SERIES



Associates

MASTERS OF *Dance*

10.05.22

EVAN SWENSON

Ballet: Jumps and Turns

10.28.22

**GRACIE WHYTE &
LAURA BERG**

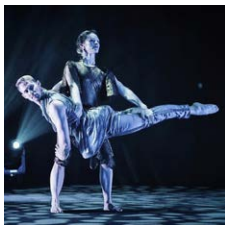
Ground Grooves

11.07.22

ROBBIE SHAW

Match Cutting in Screen Dance



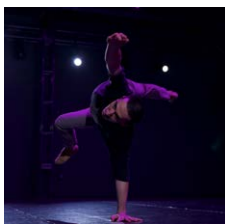


EVAN SWENSON

Ballet: Jumps and Turns

In a master class that focuses on developing the strength, power, flexibility, and technique necessary for more advanced leaps, jumps, and pirouettes, emphasis will be placed on proper body alignment, spotting, and turnout. You will be taught combinations that will enhance your dance repertoire for multiple dance styles. Evan Swenson has danced with many companies across the US, including Josie Walsh's BalletRED, Houston Ballet, Atlanta Ballet, New York Theater Ballet, and freelanced in Los Angeles, New York, Europe, and China.

Wed, October 5 | 10:15 a.m. - 12:15 p.m. | Free | CPC 304/308



GRACIE WHYTE & LAURA BERG

Ground Grooves

Ground Grooves is a contemporary floorwork technique emphasizing continuous and fluid movement from a methodical and safe approach. Working both with and without momentum, dancers move through a variety of rolls, slides, inversions, shoulder rolls, and movements that lead them in and out of the floor. Classes emphasize a lush, spongy movement quality by absorbing impact with clarity and ease. Gracie Whyte and Laura Berg are the founders of WHYTEBERG, a Los Angeles-based contemporary dance theatre duo.

Fri, October 28 | 12:30 p.m. - 2:30 p.m. | Free | CPC 304/308



ROBBIE SHAW

Match Cutting in Screen Dance

'Match Cutting' is a broad term used in both continuity and montage film editing approaches. By matching and contrasting action, shape, idea, and sound, you can create filmic sequences that are visceral and abstract, while rich in symbolism. Robbie Shaw has created dozens of choreographic works for both the stage and screen, presenting in venues that include Dance Camera West, Utah Dance Film Festival, Dance Films Association, and more.

Mon, November 7 | 1 p.m. - 3 p.m. | Free
Hybrid: CPC 304 or Zoom at smc.edu/dance

Sponsored by the SMC Associates and SMC Dance Department.

♿ If you need an accommodation due to a disability, please contact the Center for Students with Disabilities at dsps@smc.edu or 310-434-4265, at least 5 business days in advance.

The Santa Monica College Associates is a community-based support group that brings outstanding speakers, performers, and special events to SMC to enhance student excellence. Associates members receive invitations to special receptions and advance notices of lectures. Annual Associates memberships are entirely tax-deductible. Call 310-434-4100 or visit smc.edu/associates for more information.



SANTA MONICA COMMUNITY COLLEGE DISTRICT BOARD OF TRUSTEES

Dr. Louise Jaffe, Chair; Barry Snell, Vice-Chair; Dr. Susan Aminoff; Dr. Nancy Greenstein; Dr. Margaret Quiñones-Perez; Rob Rader; Dr. Sion Roy; Catalina Fuentes Aguirre, Student Trustee; Kathryn E. Jeffery, Ph.D., Superintendent/President
Santa Monica College 1900 Pico Boulevard, Santa Monica, CA 90405