



Nursing: The Transfer Option

SANTA MONICA COLLEGE

Presenters: Nancy Cárdenas, M.A. | Counselor



Workshop Overview

- Programs and Pathways to Registered Nursing Licensure
- Typical Prerequisites to Apply BSN Nursing Programs
- Requirements for Admission
- Careers Resources
- Tips on researching Nursing programs!
- Copies of the presentation are online at www.smc.edu/workshops



Common Terms in the...

ADN = Associate Degree in Nursing

BSN = Bachelor of Science in Nursing

MSN = Master of Science in Nursing

NCLEX = National Council Licensure Examination (NCLEX-RN®)

RN = Registered Nurse

BA = Bachelor of Arts

BS = Bachelor of Science

Nursing Application Journey

Pre-Licensure Program = Program for students that are NOT a Registered Nurse (R.N.) already.

Post-Licensure Program = Program for students that are a Registered Nurse (R.N.).

ELM = Entry Level Master's Program intended for students that are NOT RNs already. *BA/BS to MSN*



Common Terms in the...

Recency = Time limit/expiration of courses.

Example: Science courses must be completed within the last 5 years. Any science courses completed more than 5 years, will need to be repeated.

Repetition = Repeating prerequisites courses.

Nursing Application Journey

Nursing Admissions Assessments:

TEAS

HESI

NLN-NEX (SMC)

*Each program will have different requirements for Admissions Assessment test. Be sure to research what is required for each school.

Programs and Pathways to Registered Nursing (RN) Licensure

ADN- Associate Degree in Nursing

Many community colleges offer programs including Santa Monica College. Students can continue to BSN program once they complete ADN and become an RN or can complete a bridge program while they are in the ADN program.

BSN- Bachelor of Science in Nursing

There are TWO options when applying to BSN programs:

- Pre-Licensure Route (**NO** RN/ADN completed)
- Post- Licensure Route (RN/ADN to BSN)

MSN - Master of Science in Nursing

Also TWO options when applying to MSN programs:

- Pre-Licensure Route - Entry Level Master's Program (ELM) (Any BA/BS to MSN)
- Post Licensure Route (BSN to MSN)

Research which program best fits you!

RN.CA.GOV
Nursing.CAS



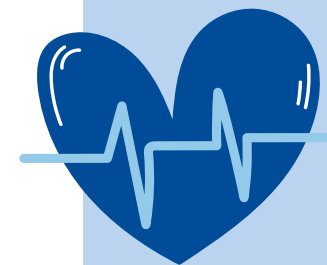
Do some students prepare to apply for both ADN and BSN programs? **YES!** You will need to do thorough research and compare the requirements (general education and major preparation courses) for all the programs you are applying for.

All these Pre-Licensure Paths prepare you to become an R.N.!



ADN- Associate Degree in Nursing

Prerequisites + 2 years =
RN Licensure



BSN- Bachelor of Science in Nursing

Prerequisites + Transfer Requirements + 3 years
= RN Licensure



MSN - Master of Science in Nursing

Bachelor's Degree + Prerequisites + 2 years =
RN Licensure



You can check out
NCLEX pass rates by
program online at
rn.ca.gov

Special Note: Completion times are an estimate. Program completion timeline depends on program and student.

Required Prerequisites

- Varies by program (ADN, BSN or MSN) **and** varies by college or university
 - Articulation (begin your research early!)
 - www.assist.org (CCC/CSU/UC/Some Private)
 - AND**
 - Nursing Program Websites
- **Recency** - varies by program. Most prerequisites need to be current (within 5 years) - as well as some GE courses at CSUs.
- **Repetition** - is repeating prerequisites okay?
 - Depends on program.
 - Look closely at repetition policies for Ws, Ds, and Fs - policy for a "W" and "EW" vs "F" may be different.
- **Number of Times you can Apply** - varies by programs. Some will only allow students to apply once, twice, unlimited, etc.



When will you plan to take your prerequisites courses? Semester or Intersession?
Balance your course load each semester. Meet with a Counselor to assist with your educational plan. Take advantage of FREE tutoring offered at SMC - www.smc.edu/tutoring



Admissions Requirements

- **NOTE: This is NOT a comprehensive list and varies by program/school**
- **Common Science Courses:** Chemistry, Human Anatomy, Human Physiology and Microbiology
- **Other Major Preparation Courses May Includes:** Statistics, Sociology, Lifespan Psychology, and English Composition
- General Education Courses
- GPA (prerequisites, cumulative, transferable)
- Prerequisites (completion timeline)
 - Example, for Fall 2027 admissions, aim to complete by major prep courses by Fall 2026.
- Supplemental Applications
 - Due date for those applications
- Nursing Entrance Exam Score(s) - what type of exam? TEAS, NLN-NEX, or others?
- Criminal Background Check and Drug Test



Begin your research on all requirements early for the each nursing program/school!

Additional exploratory preparation courses include Biology 2 (Human Biology) - which could be completed before Anatomy.

Talk to a Counselor to help plan out your courses!



Example: Admission Requirements Comparison

Special Note: These are examples with information pulled from assist.org. Information may be outdated. Always meet with a Counselor to plan out courses and create your educational plan.

CSULB

Generic BSN transfer requirements

Science Requirements

- CHEM 19
- ANATMY 1
- PHYS 3
- MCRBIO 1

Other Major Preparation Requirements

- STAT C1000
- ENGL C1000
- ENGL C1001
- COMM C1000
- PSY C1000
- SOCIOL 1

Testing

- Requires Casper Situational Judgement Test

GPA

- Minimum cumulative GPA of 3.25

UCLA

Generic BSN transfer requirements

Science Requirements

- Chem 11 (prerequisite: Chem 10)
- Chem 12
- Chem 21
- BIOL 21
- BIOL 22
- BIOI 23
- ANATMY 1
- PHYS 3
- MCRBIO 1 (strongly recommended)

Other Major Preparation Requirements

- MATH 7 (strongly recommended)
- ENGL C1000
- ENGL C1001
- COMM C1000 (strongly recommended)
- PSY C1000 (strongly recommended)

Testing

- No testing

Additional Requirements

- Statement of Purpose
- Resume
- Letters of Recommendation

GPA

- Minimum cumulative GPA of 3.5

Career Related Resources



RN jobs will have posted degree and/or experience requirements

What are they requiring? What positions require ADN, BSN, MSN degrees?



Volunteering Opportunities

UCLA Care Extender Program, UCLA Volunteer Center, Cedars Sinai TCAB, Kaiser, and many more. Check out [SMC Health & Wellness Experiential Learning Opportunities](#)



Career Services Center

They have a wealth of resources! [SMC Career Services](#)



Make Connections Early! Through networking, [student clubs](#), volunteer work, or working in the field. SMC's Noncredit Program offers a FREE Certified Nursing Assistant Pre-Certification Program. [CNA Pre-Certification Program](#)



Gaining Experience

Healthcare Options

01

UCLA

- Care Extender Program
- Ronald Reagan - Student Program
- Santa Monica - Student Program

02

Cedars Sinai

Transforming Care at Bedside
(TCAB).

03

California Hospital Medical Center

Dignity Health Adult Volunteers

04

Kaiser Permanente

- Los Angeles Medical Center
- West Los Angeles Medical Center

Why Meet with Career Services Center?

1

Share Specific Ways You Can Gain and Show Experience

- Volunteer, Research, Internship
- On-Campus Employment
- Off-Campus Employment
- Student Leadership
- Relevant Coursework

2

Prepare You For the Search Process

- Resume/CV and Cover Letter Education and Critiquing
- Networking and Interviewing Tips and Practice
- Demystifying the Job, Volunteer, Research, and Internship Search Process

Career Services Center



CONTACT INFORMATION

(310) 434-4337

1st Floor, Student Services Center

Online Resources to Begin Your Research!



California Board of Registered Nursing

<https://www.rn.ca.gov/>

CA NCLEX Pass Rates

<https://www.rn.ca.gov/education/passrates.shtml>

Nursing Programs

<https://www.rn.ca.gov/education/rnprograms.shtml>

Certified Nursing Assistant (CNA)

[CA Department of Public Health](#)
[SMC's Noncredit CNA Program](#)

CSU Nursing Programs

[CSU Nursing Programs](#)

ASSIST.ORG

Articulation with UC/CSU/Some Private
<https://assist.org/>

Associate Degree in Nursing at SMC



Attend Information Session

Registration is required!

Visit www.smc.edu/nursing for more details

Health Sciences Counseling

There is a team of Health Sciences Counselors available to meet you.

Visit [Health Sciences Counseling](#) for details on how to book an appointment.



Reminder! Starting off with an Associate Degree Nursing program can still get you to a Bachelor of Science Nursing program. Referred to as ADN/RN to BSN route. Some "jumpstart" programs may also be available.



FALL 2025
Health Sciences Information Sessions

NURSING		
Wed, Sep 24	12 P.M.	Zoom
Tue, Sep 30	12 P.M.	Main Campus, SSC 291
Fri, Oct 17	12 P.M.	Zoom
Thu, Oct 30	3 P.M.	Bundy Campus
Tue, Nov 4	11:15 A.M.	Main Campus, SSC 290
Thu, Nov 13	5 P.M.	Zoom
Mon, Dec 1	3 P.M.	Bundy Campus

RESPIRATORY CARE		
Mon, Sep 22	3 P.M.	Zoom
Thu, Oct 16	11:15 A.M.	Zoom
Tue, Nov 18	3 P.M.	Bundy Campus

HOW TO SIGN UP

1. Login to Corsair Connect
2. Select "Counseling & Special Programs"
3. Expand on "Information Sessions"
4. Select "Nursing Program Information" or "Respiratory Care Program Information Session"
5. Sign Up for date and time you would like to attend



smc.edu/academics/academic-departments/health-sciences/nursing/information-sessions.php

SANTA MONICA COLLEGE
SANTA MONICA COMMUNITY COLLEGE DISTRICT BOARD OF TRUSTEES
Dr. Nancy Greenstein, Chair; Dr. Scott Roy, Vice Chair; Dr. Luis Barrios Castañón, Anastasia Foster; Dr. Margaret Quiñones-Perez;
Dr. Toni Roberts, Rob Rader, Sandra Mariani, Joanne Torres, Kathryn E. Jaffrey, Ph.D., Superintendent/President
Santa Monica College | 1300 Pico Blvd. Santa Monica, CA 90405 | smc.edu



5 Helpful Tips for your Nursing Transfer Journey

1

Start your research on transfer school options early!

2

Create a nursing school planning sheet and include 3-5 nursing program options with key information

3

Think strategically when taking Chemistry, Anatomy, Physio and Micro as these create your "science GPA" and are key for nursing admission

4

Attend transfer school nursing information sessions

5

Meet with a counselor regularly to update your ed plan and discuss nursing program options

Nursing Transfer Planning Worksheet



Nursing Transfer PLANNING WORKSHEET				
	Transfer School 1:	Transfer School 2:	Transfer School 3:	Transfer School 4:
Deadline to Apply?				
Supplemental Application?				
Required Science GPA?				
Required cumulative GPA?				
Recency policy?				
Repeat & W Policy?				
Can prereqs be in progress?				
Required admission test?				
Additional course requirements?				
Fall and Spring Admission?				
Information Session offered?				
Other notes				



**Thank you for
attending!**